

# Memo

**To:** Park Visitors, MetroParks Employees, Volunteers, Contractors, Etc.  
**From:** Jonathan Granville, Executive Director *JRG*  
**Copy:** Board of Park Commissioners, Park/Project Information Boards In and Near Closed Area  
**Date:** September 26, 2019  
**Re:** Closure of Night Heron Trail at Gilmore MetroPark

---

Based on the authority contained in Section 1545.09 20c of the Rules and Regulations of the MetroParks, in an effort to enhance public safety, protect park resources, maintain good order, and promote enjoyment of park facilities, the mostly-natural-surfaced path known as the Night Heron Trail at Gilmore MetroPark, is closed to park visitors and will not be maintained in order to avoid potential adverse impacts to adjoining privately-held lands. The closure is effective immediately and remains in effect until further notice. The other trails on the property remain open as before. See **attached** map of trail to be closed under this order.

Contact the MetroParks at [info@yourmetroparks.net](mailto:info@yourmetroparks.net) or by calling (513) 867-5835 for additional information.

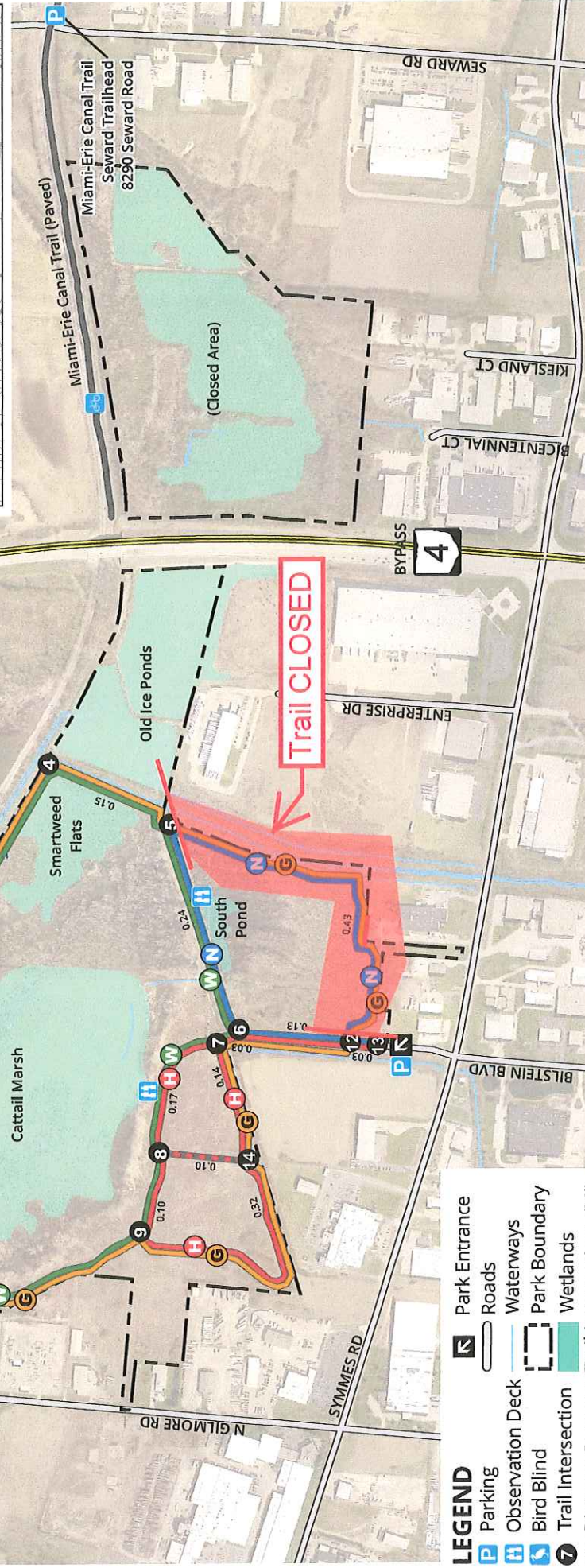
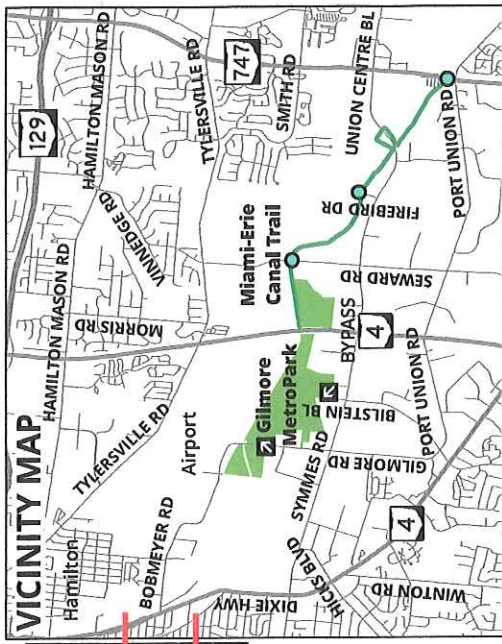
---

## TRAILS

Symbol	Main Trail	Spur / Shortcut	Name	Length (miles)	Type
			Highlands Trace	1.1	Loop
			Night Heron Trail	0.9	Loop
			Wetlands Trail	1.8	Loop
			Great Egret Trail	2.4	Loop
			Miami-Erie Canal Trail	3.0	Paved, Out/Back

### GENERAL INFORMATION

Park open daily 8am-dark  
 Display Motor Vehicle Permit  
 (Free for Butler County Residents)  
 For information call (513) 867-5835  
 For emergency call 911

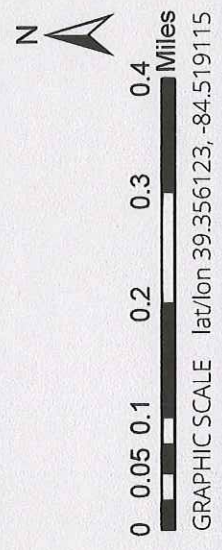


- LEGEND**
- Parking
  - Observation Deck
  - Bird Blind
  - Trail Intersection
  - Distance Between Trail Intersections (Mi)
  - Park Entrance
  - Roads
  - Waterways
  - Park Boundary
  - Wetlands

# Gilmore MetroPark

**Gilmore Road Entrance**  
 7950 Gilmore Road  
 Hamilton, OH 45015

**Bilstein Blvd. Entrance**  
 8300 Bilstein Blvd.  
 Hamilton, OH 45015



**MetroParks**  
 of Butler County, OH

2051 Timberman Road, Hamilton, OH 45013  
 www.YourMetroParks.net (513) 867-5835