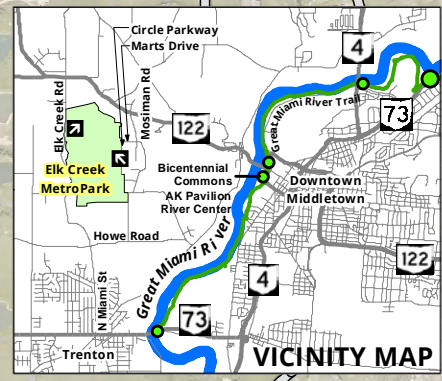


GENERAL INFORMATION
 Park open daily 8am-dark
 Display Motor Vehicle Permit
 (Free for Butler County Residents)
 For information call (513) 867-5835
 For emergency call 911

Symbol	Main Trail	Spur / Shortcut	Trail Use	Name	Length (miles)	Type
D	White		Hiker/Biker	Dave's Trace	2.8	Loop
P	Purple		Hiker	Dry Run Trail	2.3	Loop
E	Brown		Hiker	Elk Creek Trail	0.5	Out/Back
F	Cyan		Hiker/Biker	Foothills Trail	0.8	Out/Back
H	Yellow		Hiker	Highlands Trail	0.8	Loop
M	Green		Hiker/Biker	Meadow Trail	0.8	Loop
R	Red		Hiker	Ridge Trail	1.4	Loop
T	Blue		Hiker/Biker	Twin Lakes Trail	2.0	Loop
V	Orange		Hiker	Valleyview Trail	3.6	Loop
S	Pink		Hiker/Biker	South Pond Trail	1.4	Loop



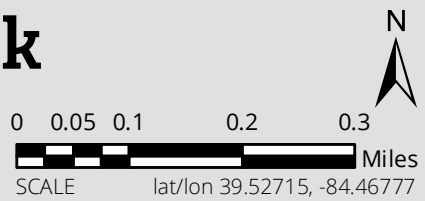
LEGEND

- Park Entrance
- Playground
- Parking
- Shelter
- Restroom
- Hiking Trail
- Horse Trail
- Multi-Use Trail
Pedestrians & Bicycles
- Trail Intersection
- Roads
- Waterways
- Park Boundary
- Horse Waypoint
- Miles Between Trail Intersections

Elk Creek MetroPark

Sebald Park Area
 5580 Elk Creek Road
 Middletown, OH 45042

Meadow Ridge Area
 5101 Circle Parkway
 Middletown, OH 45042



MetroParks
 of Butler County, OH

2051 Timberman Road, Hamilton, OH 45013
 www.YourMetroParks.net (513) 867-5835

ML 3/20/2020