

#### LEGEND

#### Mowing Areas

Contract No. 1

Roads

#### VICINITY MAP

Property Lines

Contractor to mow all lawn areas inside shaded areas which have been maintained as lawn previously.

Please see Contract Descriptions that coincide with each mapping area for more detailed information. Acreages shown are approximate and may include pavement areas. It is the Proposer's responsibility to visit and become familiar with each site prior to submitting a proposal.

#### SPECIAL INSTRUCTIONS:

Cemetery grounds around gravestones and monuments shall be mowed with walk-behind mowers only.

## Mowing Map

Contract No. 1, Map No. 1

Indian Creek MetroPark

Pioneer Church and Cemetery Area

Site Address: 3000 Indian Creek Rd.  
Oxford, OH 45056

0 75 150 300 450 Feet

GRAPHIC SCALE

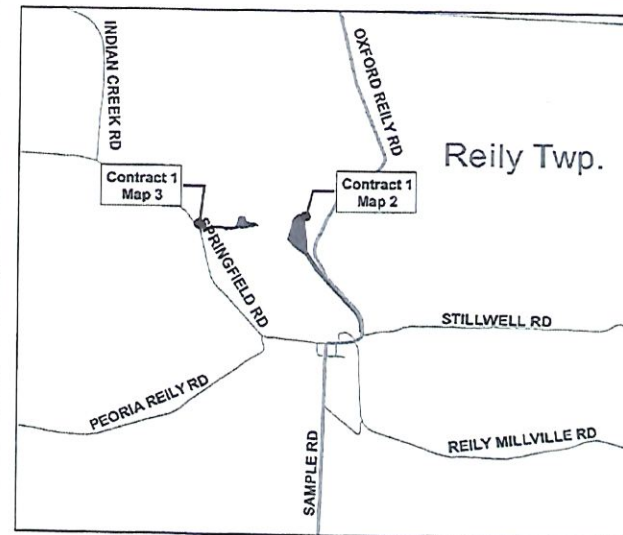
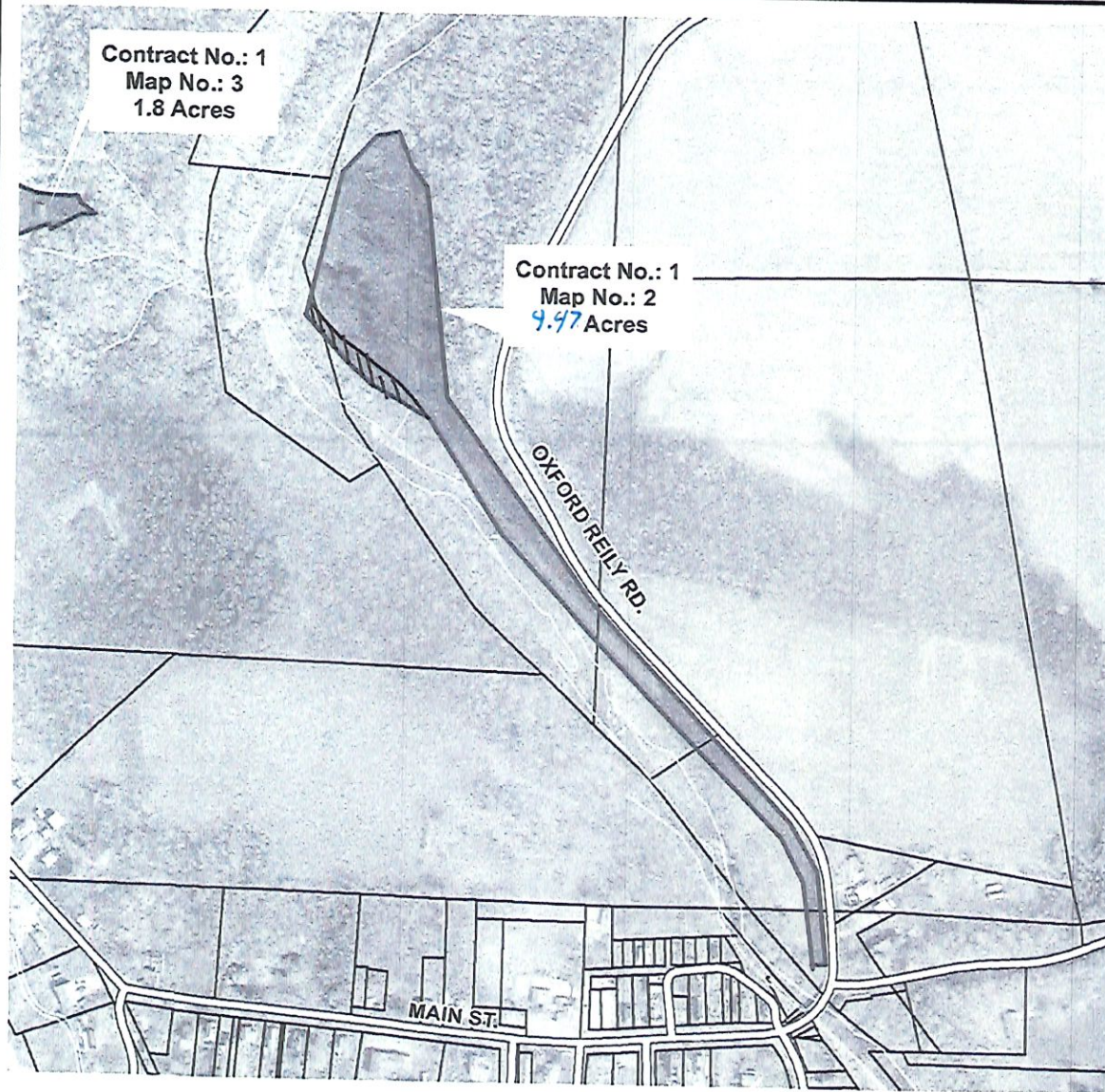


**MetroParks**  
of Butler County, OH

ML 12/6/2022

2051 Timberman Road, Hamilton, OH 45013  
www.YourMetroParks.net (513) 867-5835





#### LEGEND

Mowing Areas

Contract No. 1

Roads

#### VICINITY MAP

Property Lines

Contractor to mow all lawn areas inside shaded areas which have been maintained as lawn previously.

Please see Contract Descriptions that coincide with each mapping area for more detailed information. Acreages shown are approximate and may include pavement areas. It is the Proposer's responsibility to visit and become familiar with each site prior to submitting a proposal.

SPECIAL INSTRUCTIONS:

**Mowing Map**  
**Contract No. 1, Map No. 2**  
**Indian Creek MetroPark**  
**Oxford Reily Road Area**

Site Address: 1899 Oxford Reily Rd.  
 Oxford, OH 45056

0 200 400 800 1,200 Feet

GRAPHIC SCALE

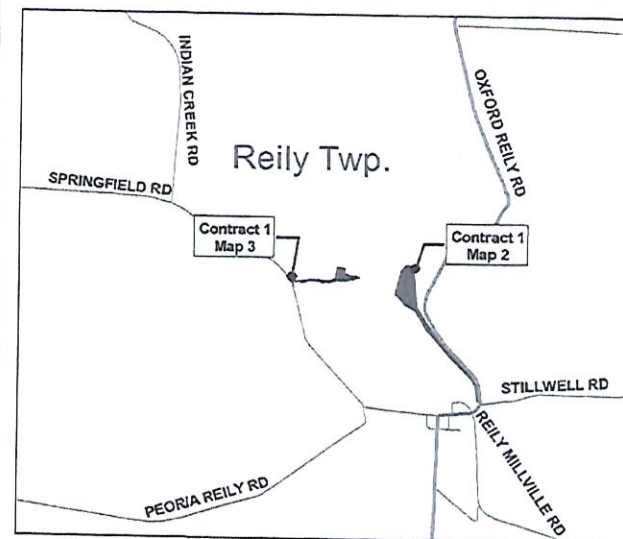
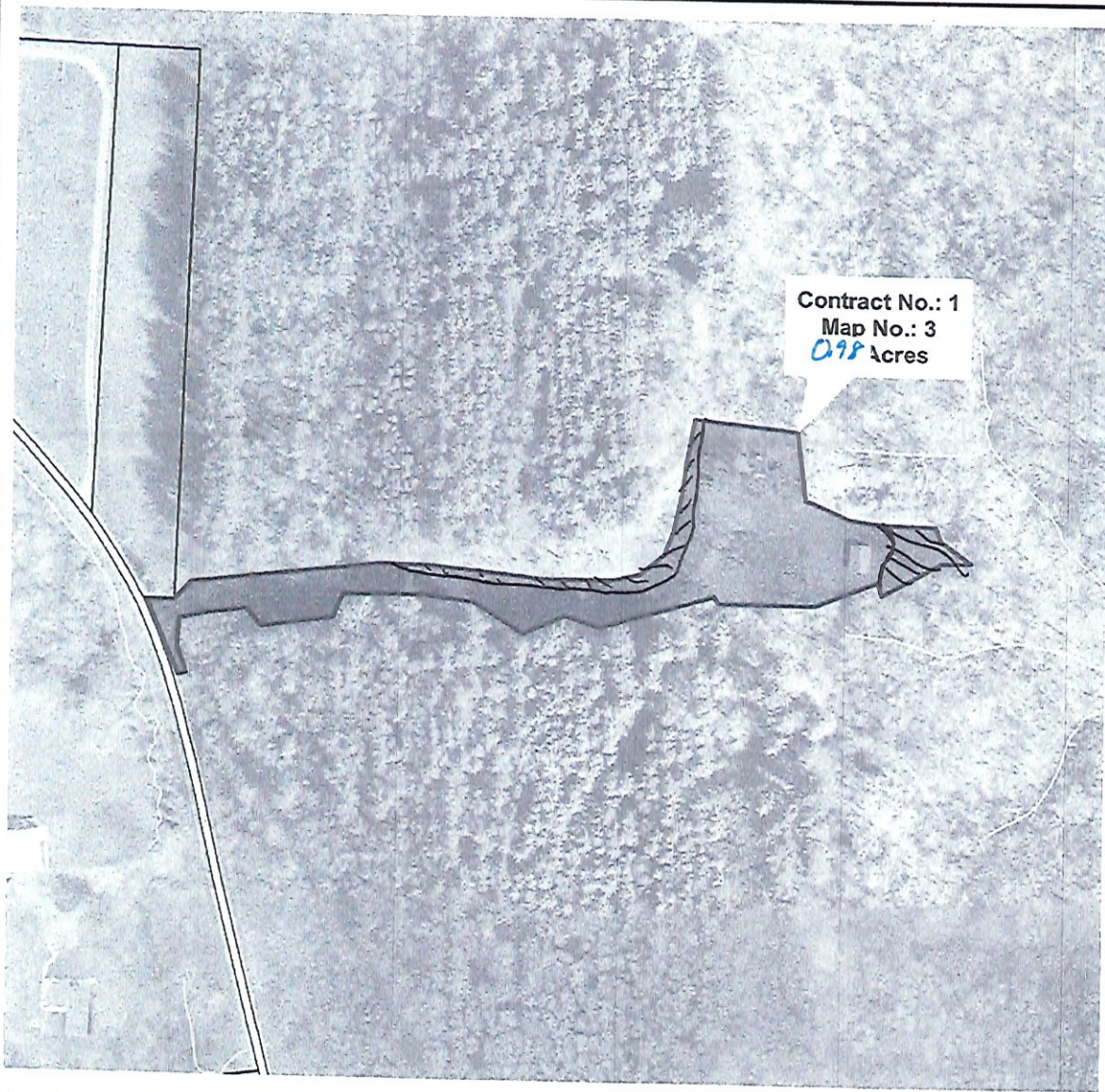


**MetroParks**  
 of Butler County, OH

ML 12/6/2022

2051 Timberman Road, Hamilton, OH 45013  
[www.YourMetroParks.net](http://www.YourMetroParks.net) (513) 867-5835





#### LEGEND

Mowing Areas

Contract No. 1

Roads

#### VICINITY MAP

Property Lines

Contractor to mow all lawn areas inside shaded areas which have been maintained as lawn previously.

Please see Contract Descriptions that coincide with each mapping area for more detailed information. Acreages shown are approximate and may include pavement areas. It is the Proposer's responsibility to visit and become familiar with each site prior to submitting a proposal.

SPECIAL INSTRUCTIONS:

**Mowing Map**  
**Contract No. 1, Map No. 3**  
**Indian Creek MetroPark**  
**Springfield Road Area**

Site Address: 6500 Springfield Rd.  
 Oxford, OH 45056



GRAPHIC SCALE

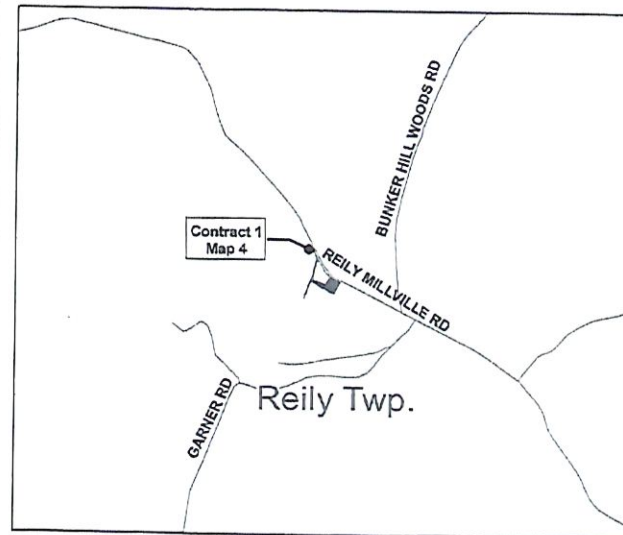
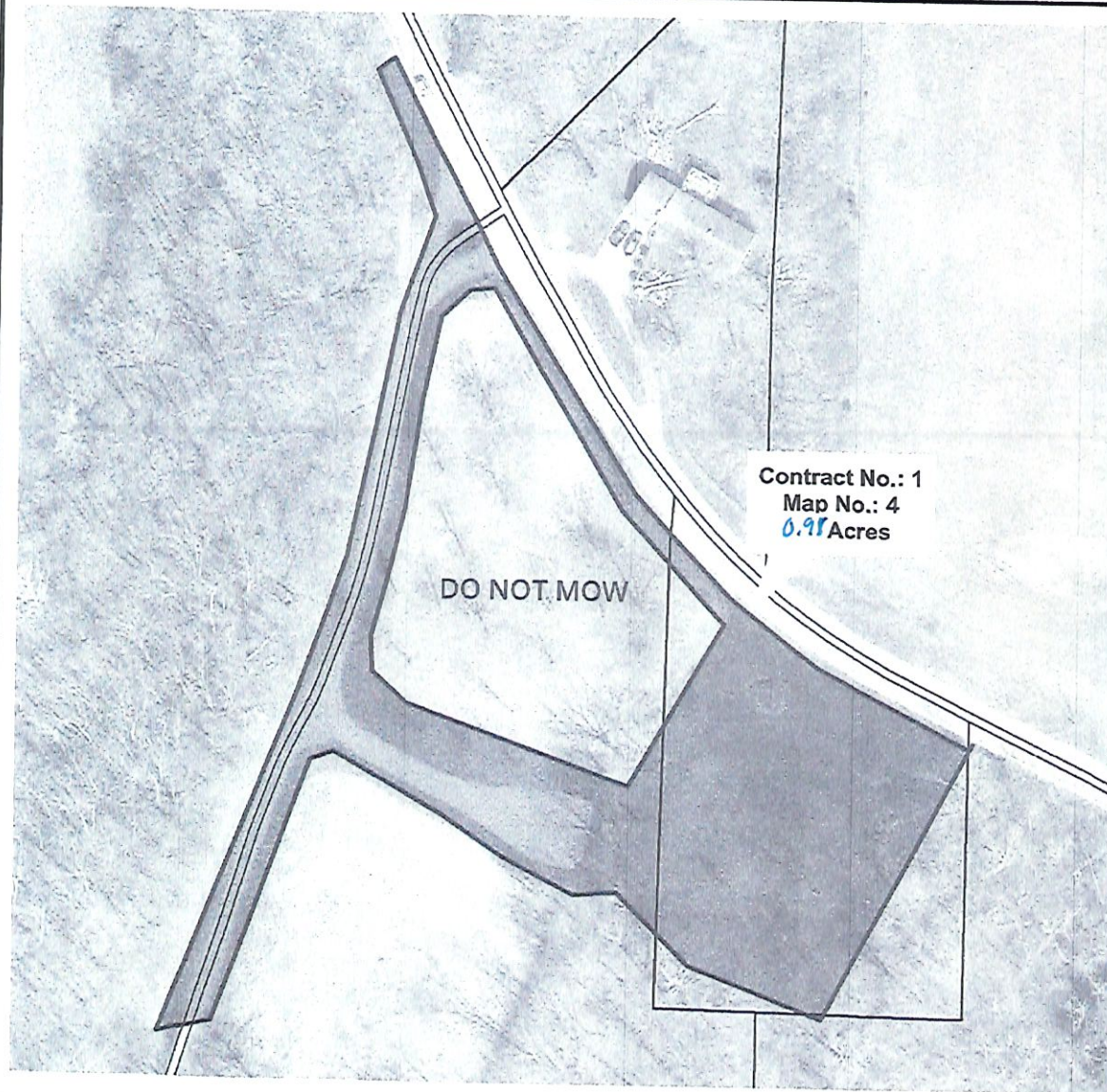


**MetroParks**  
 of Butler County, OH

ML 12/6/2022

2051 Timberman Road, Hamilton, OH 45013  
[www.YourMetroParks.net](http://www.YourMetroParks.net) (513) 867-5835





#### LEGEND

##### Mowing Areas

Contract No. 1

Roads

#### VICINITY MAP

Property Lines

Contractor to mow all lawn areas inside shaded areas which have been maintained as lawn previously.

Please see Contract Descriptions that coincide with each mapping area for more detailed information. Acreages shown are approximate and may include pavement areas. It is the Proposer's responsibility to visit and become familiar with each site prior to submitting a proposal.

#### SPECIAL INSTRUCTIONS:

Cemetery grounds around gravestones and monuments shall be mowed with walk-behind mowers only.

## Mowing Map

Contract No. 1, Map No. 4

Indian Creek MetroPark

Bunker Hill Cemetery Area

Site Address: 5351 Reily-Millville Rd.  
Oxford, OH 45056

0 50 100 200 300 Feet

GRAPHIC SCALE

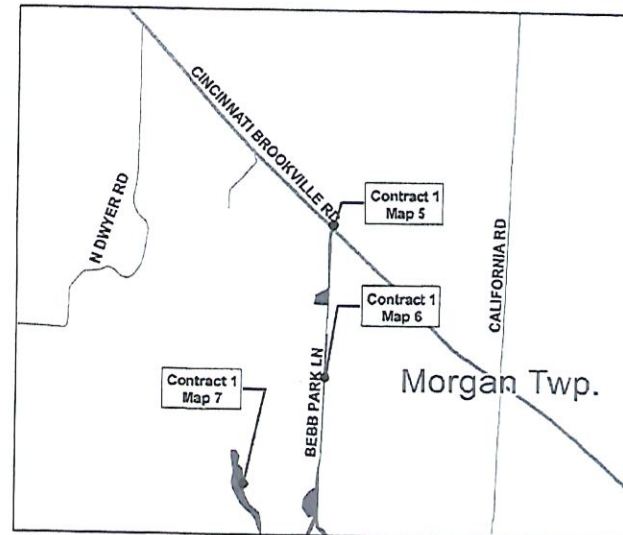
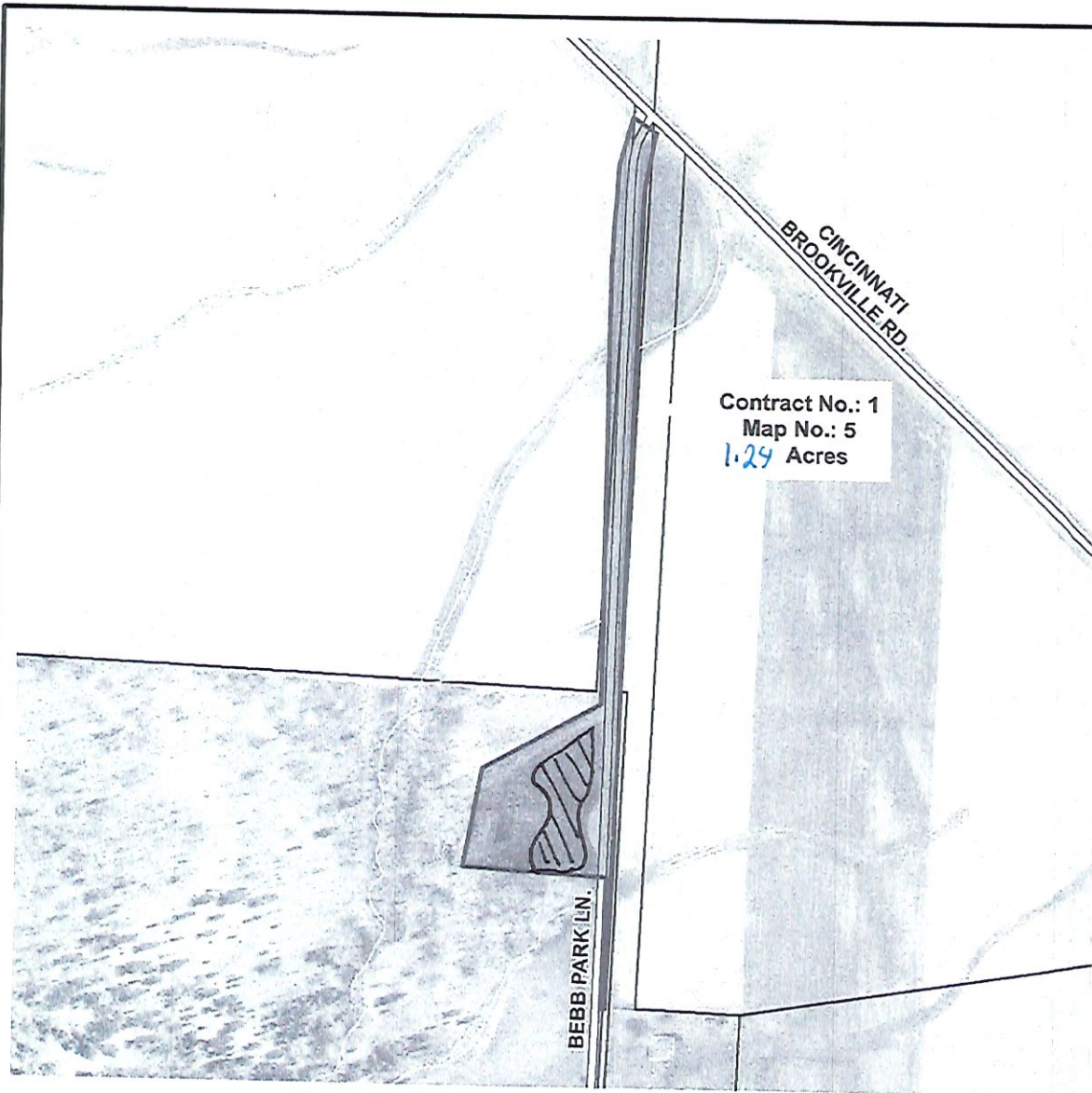


**MetroParks**  
of Butler County, OH

ML 12/6/2022

2051 Timberman Road, Hamilton, OH 45013  
www.YourMetroParks.net (513) 867-5835





#### LEGEND

**Mowing Areas**

Contract No. 1

Roads

#### VICINITY MAP

Property Lines

Contractor to mow all lawn areas inside shaded areas which have been maintained as lawn previously.

Please see Contract Descriptions that coincide with each mapping area for more detailed information. Acreages shown are approximate and may include pavement areas. It is the Proposer's responsibility to visit and become familiar with each site prior to submitting a proposal.

SPECIAL INSTRUCTIONS:

**Mowing Map**  
**Contract No. 1, Map No. 5**  
**Governor Bebb MetroPark**  
**Bebb Park Lane Area**

Site Address: 1979 Bebb Park Ln.  
 Okeana, OH 45053

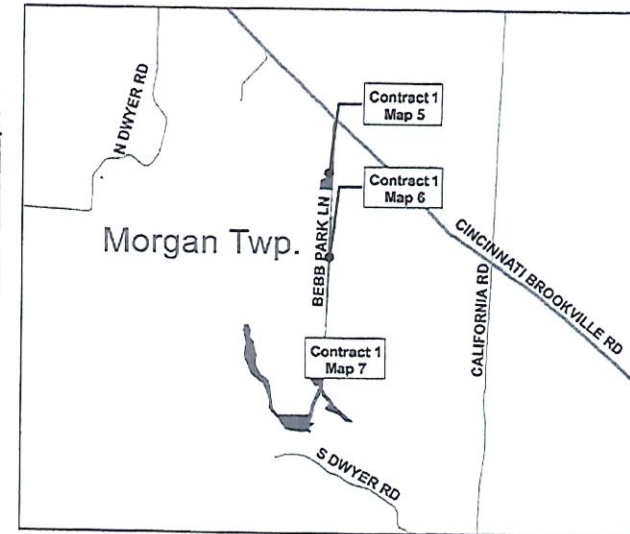


**MetroParks**  
 of Butler County, OH

ML 12/6/2022

2051 Timberman Road, Hamilton, OH 45013  
[www.YourMetroParks.net](http://www.YourMetroParks.net) (513) 867-5835





#### LEGEND

#### Mowing Areas

- Contract No. 1
- Roads

#### VICINITY MAP

- Property Lines

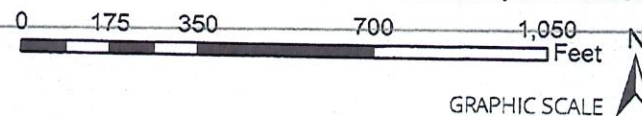
Contractor to mow all lawn areas inside shaded areas which have been maintained as lawn previously.

Please see Contract Descriptions that coincide with each mapping area for more detailed information. Acreages shown are approximate and may include pavement areas. It is the Proposer's responsibility to visit and become familiar with each site prior to submitting a proposal.

SPECIAL INSTRUCTIONS:

**Mowing Map**  
**Contract No. 1, Map No. 6**  
**Governor Bebb MetroPark**  
**Bebb Park Lane Area**

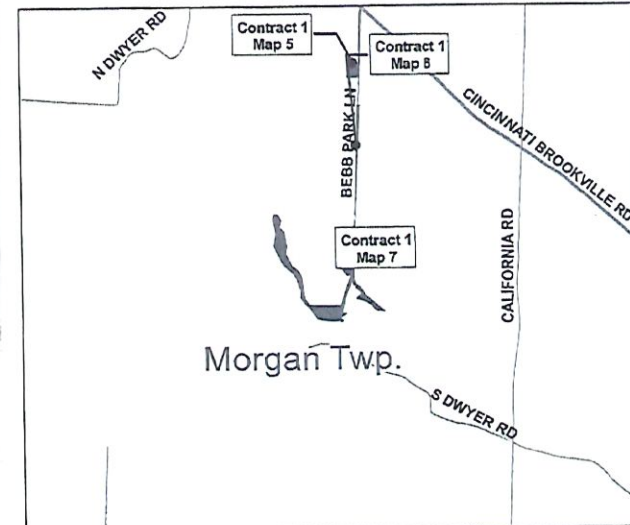
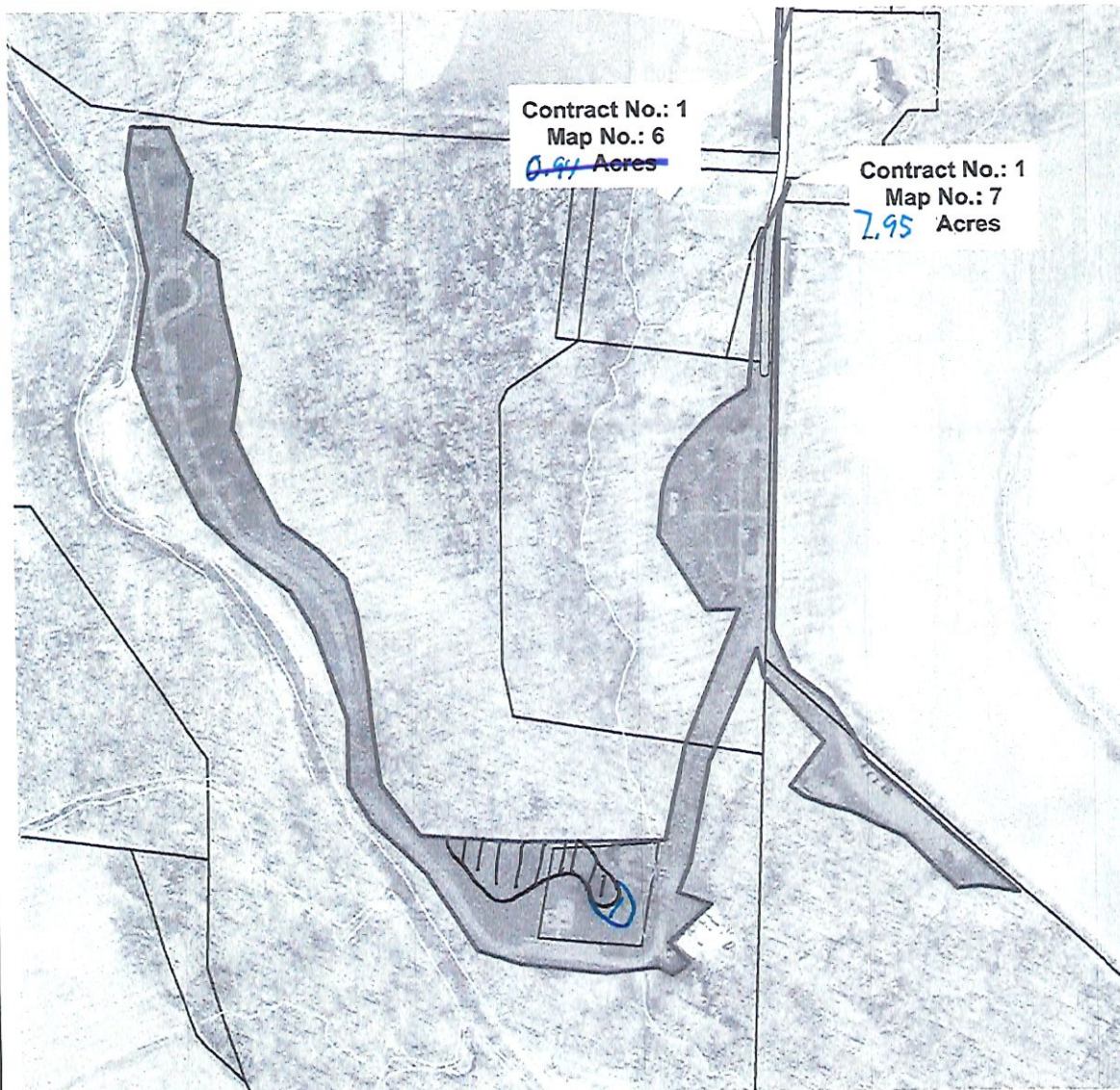
Site Address: 1979 Bebb Park Ln.  
 Okeana, OH 45053



ML 12/6/2022

2051 Timberman Road, Hamilton, OH 45013  
[www.YourMetroParks.net](http://www.YourMetroParks.net) (513) 867-5835





#### LEGEND

Mowing Areas



Contract No. 1

Roads

Contractor to mow all lawn areas inside shaded areas which have been maintained as lawn previously.

Please see Contract Descriptions that coincide with each mapping area for more detailed information. Acreages shown are approximate and may include pavement areas. It is the Proposer's responsibility to visit and become familiar with each site prior to submitting a proposal.

SPECIAL INSTRUCTIONS:

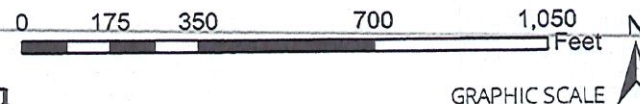
#### VICINITY MAP



Property Lines

**Mowing Map**  
**Contract No. 1, Map No. 7**  
**Governor Bebb MetroPark**  
**Pioneer Village and Maintenance Area**

Site Address: 1979 Bebb Park Ln.  
 Okeana, OH 45053

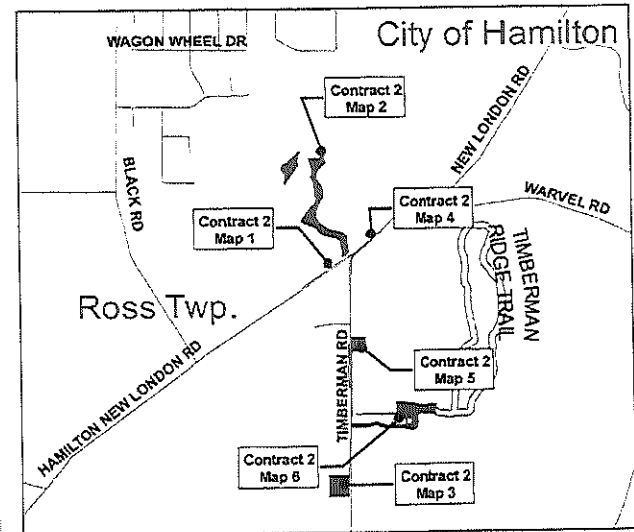
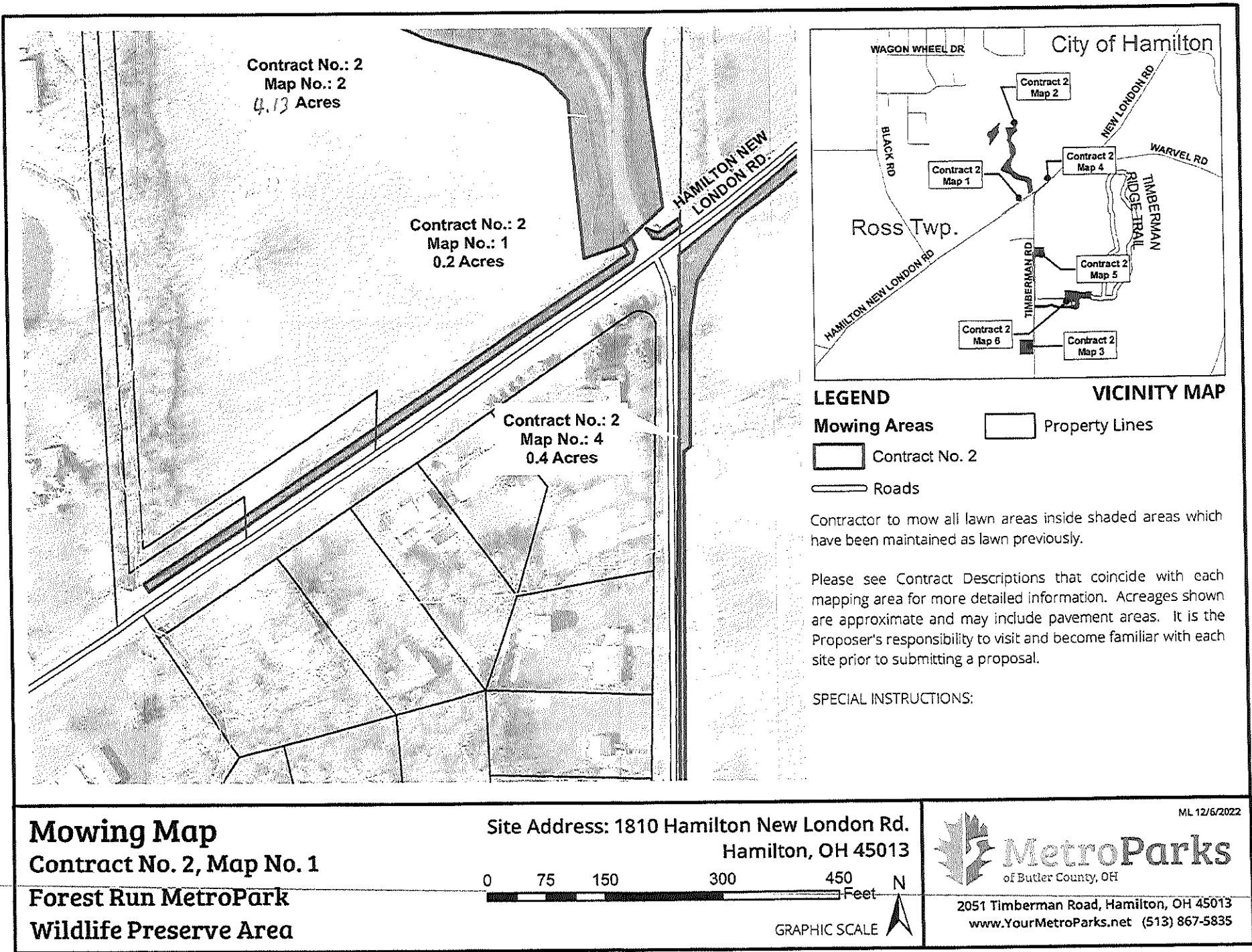


**MetroParks**  
 of Butler County, OH

2051 Timberman Road, Hamilton, OH 45013  
[www.YourMetroParks.net](http://www.YourMetroParks.net) (513) 867-5835

ML 12/6/2022





**LEGEND** **VICINITY MAP**

- Mowing Areas
- Property Lines
- Contract No. 2
- Roads

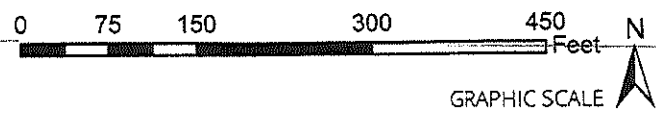
Contractor to mow all lawn areas inside shaded areas which have been maintained as lawn previously.

Please see Contract Descriptions that coincide with each mapping area for more detailed information. Acreages shown are approximate and may include pavement areas. It is the Proposer's responsibility to visit and become familiar with each site prior to submitting a proposal.

SPECIAL INSTRUCTIONS:

**Mowing Map**  
**Contract No. 2, Map No. 1**  
**Forest Run MetroPark**  
**Wildlife Preserve Area**

Site Address: 1810 Hamilton New London Rd.  
Hamilton, OH 45013

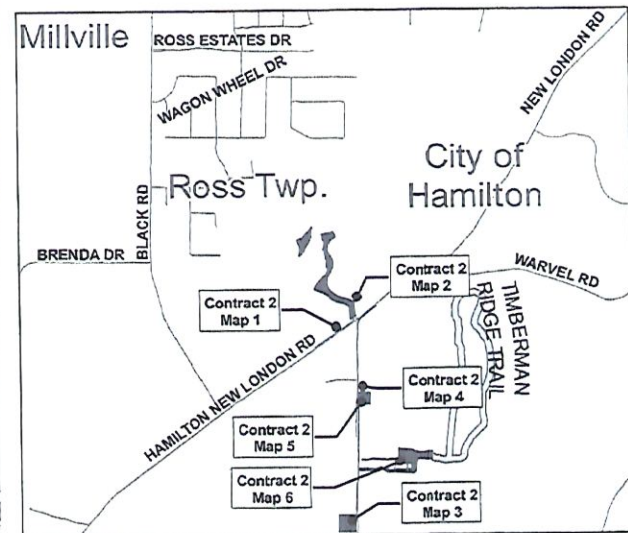
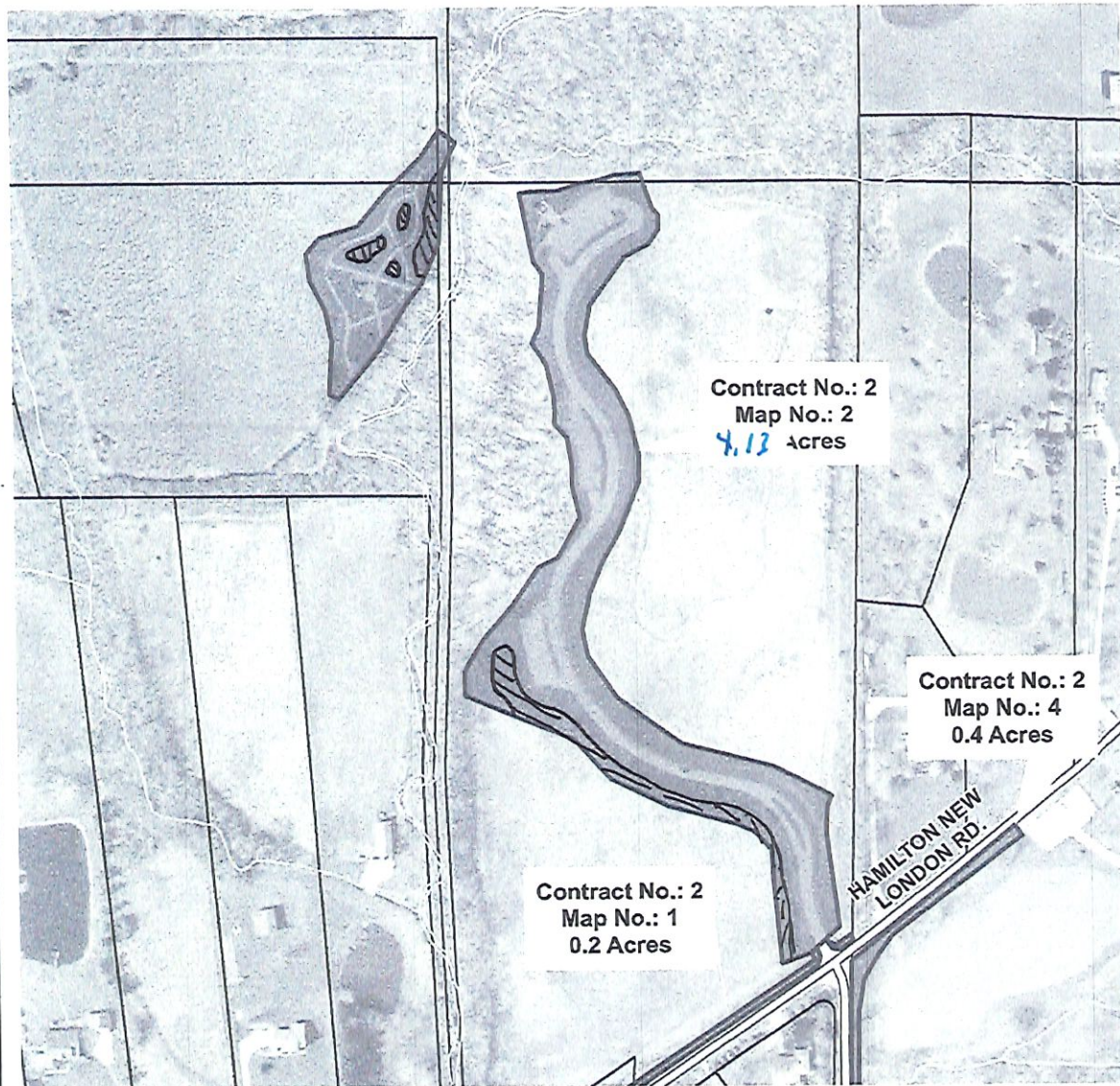


ML 12/6/2022

 **MetroParks**  
of Butler County, OH

2051 Timberman Road, Hamilton, OH 45013  
[www.YourMetroParks.net](http://www.YourMetroParks.net) (513) 867-5835





#### LEGEND

Mowing Areas

Property Lines

Contract No. 2

Roads

#### VICINITY MAP

Contractor to mow all lawn areas inside shaded areas which have been maintained as lawn previously.

Please see Contract Descriptions that coincide with each mapping area for more detailed information. Acreages shown are approximate and may include pavement areas. It is the Proposer's responsibility to visit and become familiar with each site prior to submitting a proposal.

SPECIAL INSTRUCTIONS:

**Mowing Map**  
**Contract No. 2, Map No. 2**  
**Forest Run MetroPark**  
**Wildlife Preserve Area**

Site Address: 1810 Hamilton New London Rd.  
 Hamilton, OH 45013

0 150 300 600 900 Feet

GRAPHIC SCALE

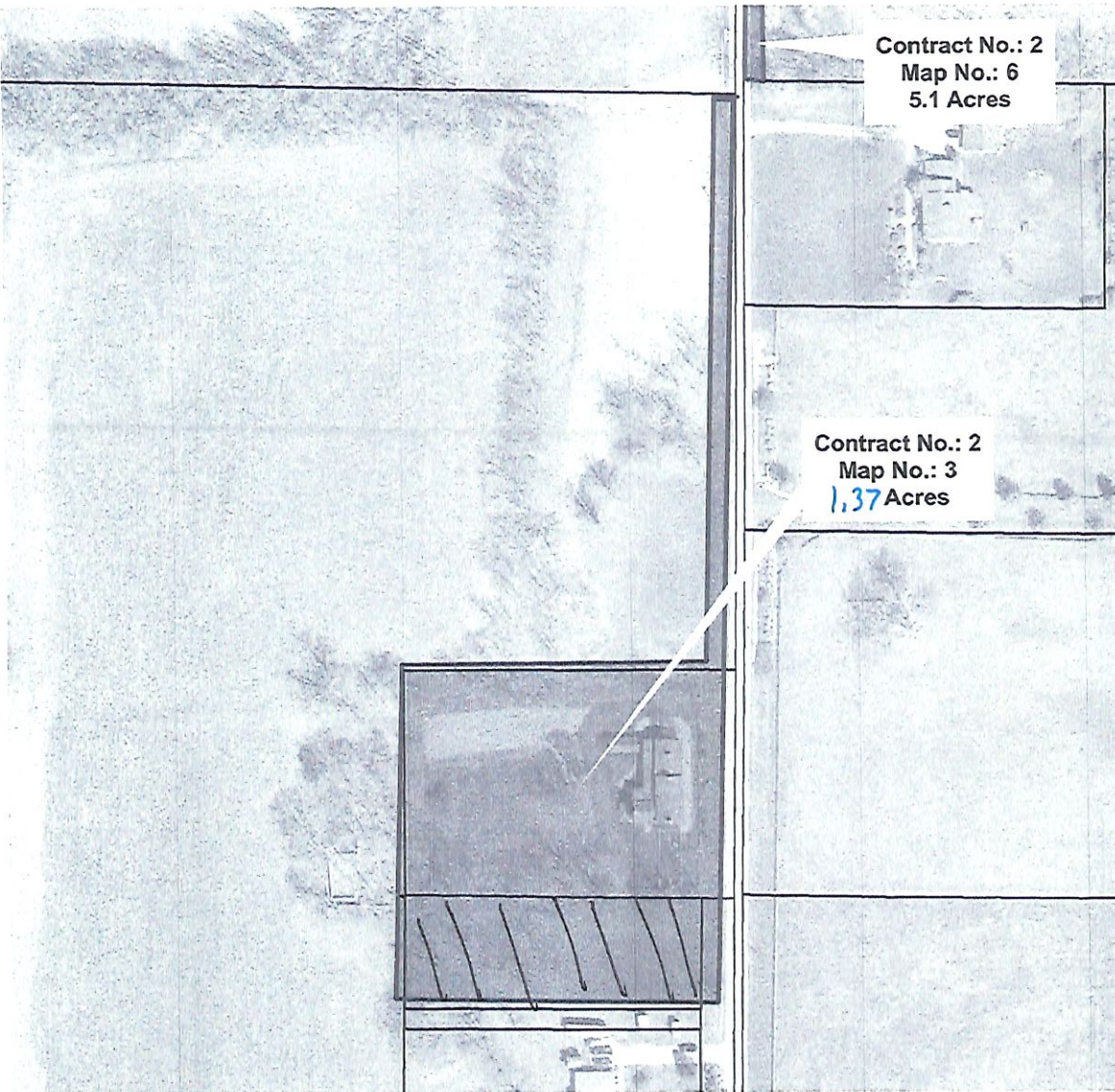


**MetroParks**  
 of Butler County, OH

2051 Timberman Road, Hamilton, OH 45013  
[www.YourMetroParks.net](http://www.YourMetroParks.net) (513) 867-5835

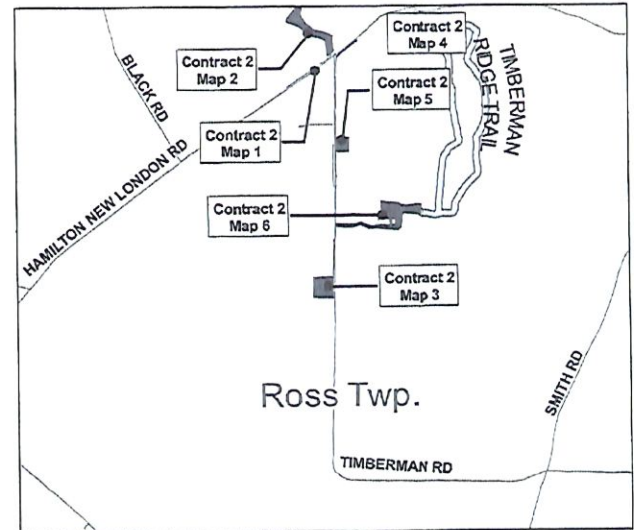
ML 12/6/2022





Contract No.: 2  
Map No.: 6  
5.1 Acres

Contract No.: 2  
Map No.: 3  
1.37 Acres



#### LEGEND

Mowing Areas



Contract No. 2

Roads



#### VICINITY MAP

Property Lines



Contractor to mow all lawn areas inside shaded areas which have been maintained as lawn previously.

Please see Contract Descriptions that coincide with each mapping area for more detailed information. Acreages shown are approximate and may include pavement areas. It is the Proposer's responsibility to visit and become familiar with each site prior to submitting a proposal.

SPECIAL INSTRUCTIONS:

## Mowing Map

### Contract No. 2, Map No. 3

Forest Run MetroPark  
Engle House / Admin Office Area

Site Address: 2051 Timberman Rd.  
Hamilton, OH 45013



GRAPHIC SCALE

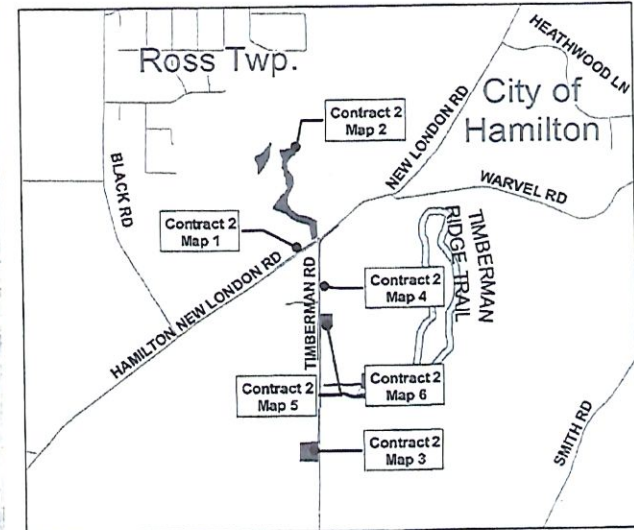
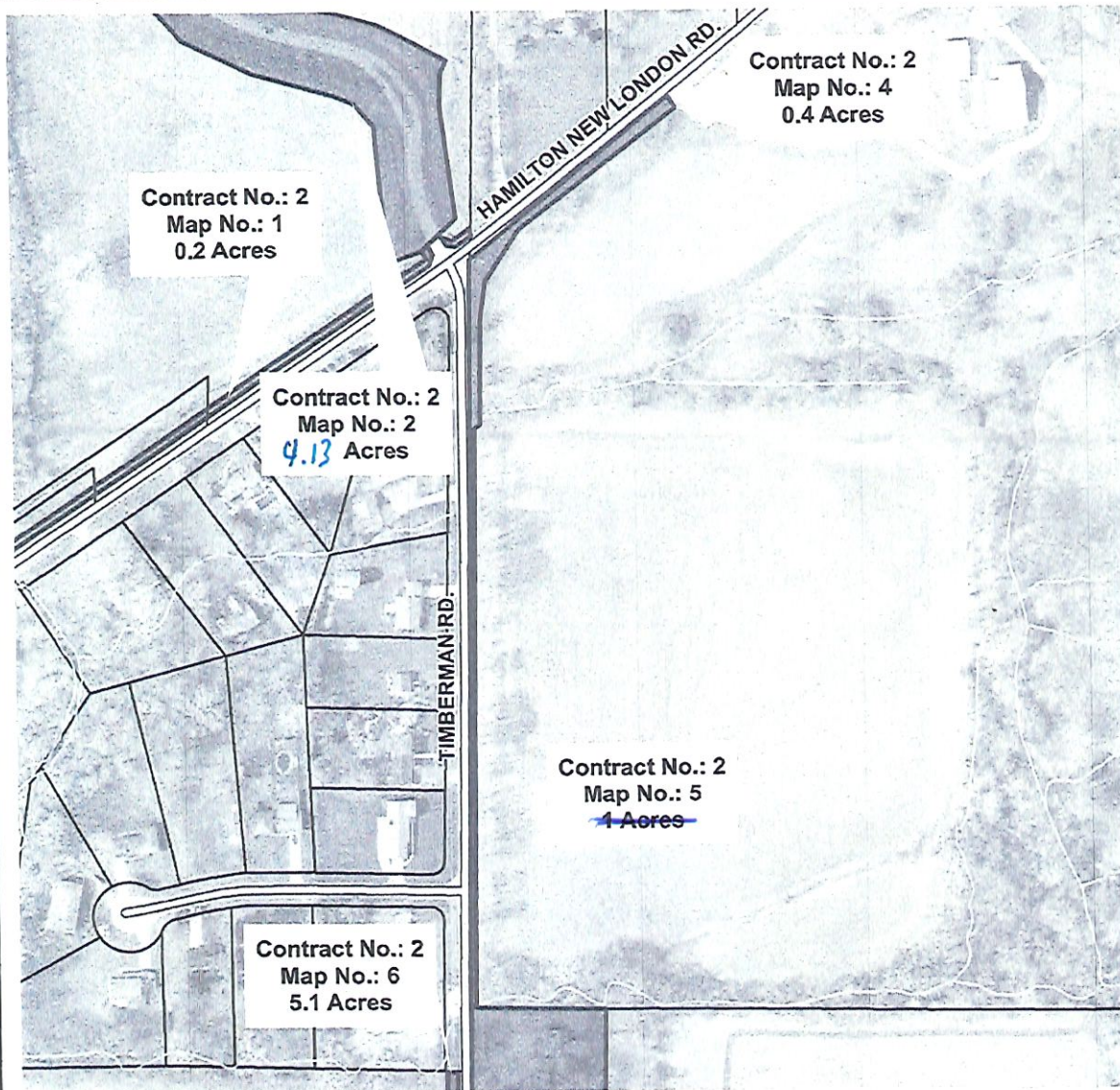


**MetroParks**  
of Butler County, OH

ML 12/6/2022

2051 Timberman Road, Hamilton, OH 45013  
www.YourMetroParks.net (513) 867-5835





#### LEGEND

Mowing Areas

Contract No. 2

Roads

#### VICINITY MAP

Property Lines

Contractor to mow all lawn areas inside shaded areas which have been maintained as lawn previously.

Please see Contract Descriptions that coincide with each mapping area for more detailed information. Acreages shown are approximate and may include pavement areas. It is the Proposer's responsibility to visit and become familiar with each site prior to submitting a proposal.

SPECIAL INSTRUCTIONS:

## Mowing Map

### Contract No. 2, Map No. 4

Forest Run MetroPark  
Operations Center and Timberman Ridge Area

Site Address: 1721 Hamilton New London Rd.  
Hamilton, OH 45013

0 125 250 500 750 Feet

GRAPHIC SCALE

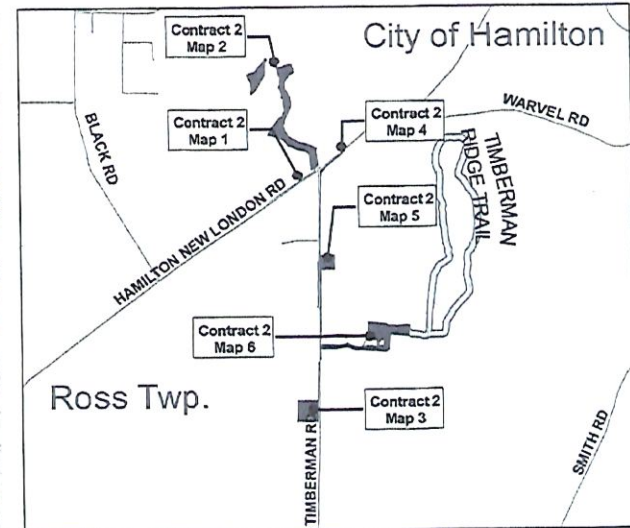
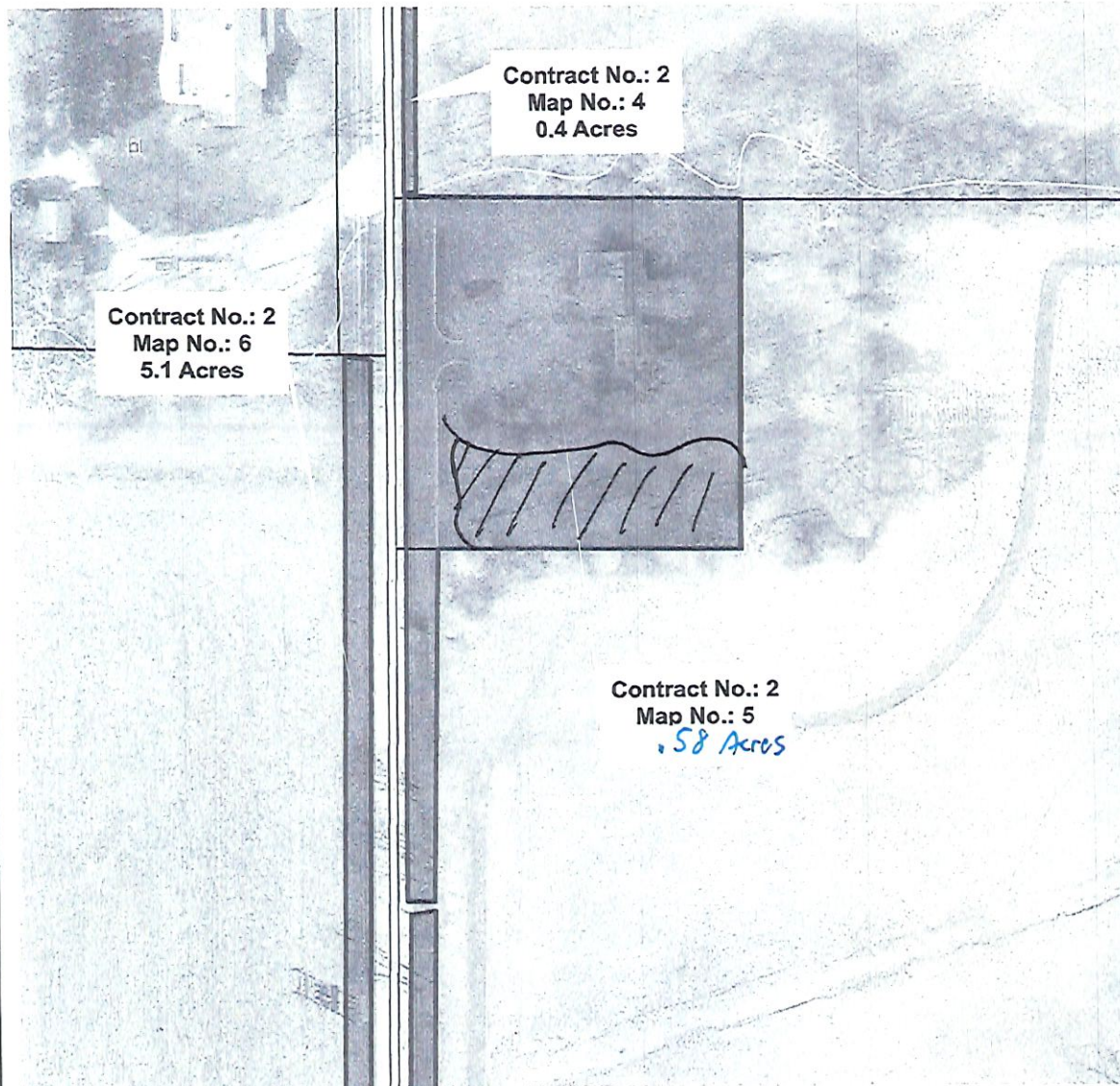


**MetroParks**  
of Butler County, OH

2051 Timberman Road, Hamilton, OH 45013  
www.YourMetroParks.net (513) 867-5835

ML 12/6/2022





#### LEGEND

Mowing Areas

Contract No. 2

Roads

#### VICINITY MAP

Property Lines

Contractor to mow all lawn areas inside shaded areas which have been maintained as lawn previously.

Please see Contract Descriptions that coincide with each mapping area for more detailed information. Acreages shown are approximate and may include pavement areas. It is the Proposer's responsibility to visit and become familiar with each site prior to submitting a proposal.

SPECIAL INSTRUCTIONS:

## Mowing Map

### Contract No. 2, Map No. 5

Forest Run MetroPark  
Park Connections Storage Building Area

Site Address: 1905 Timberman Rd.  
Hamilton, OH 45013

0 50 100 200 300 Feet

GRAPHIC SCALE



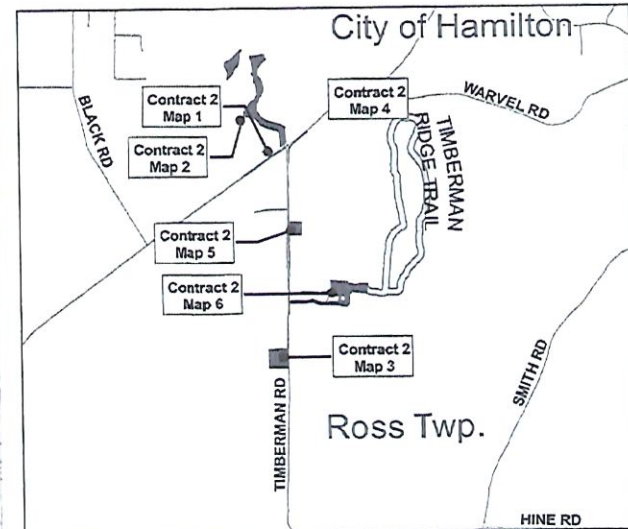
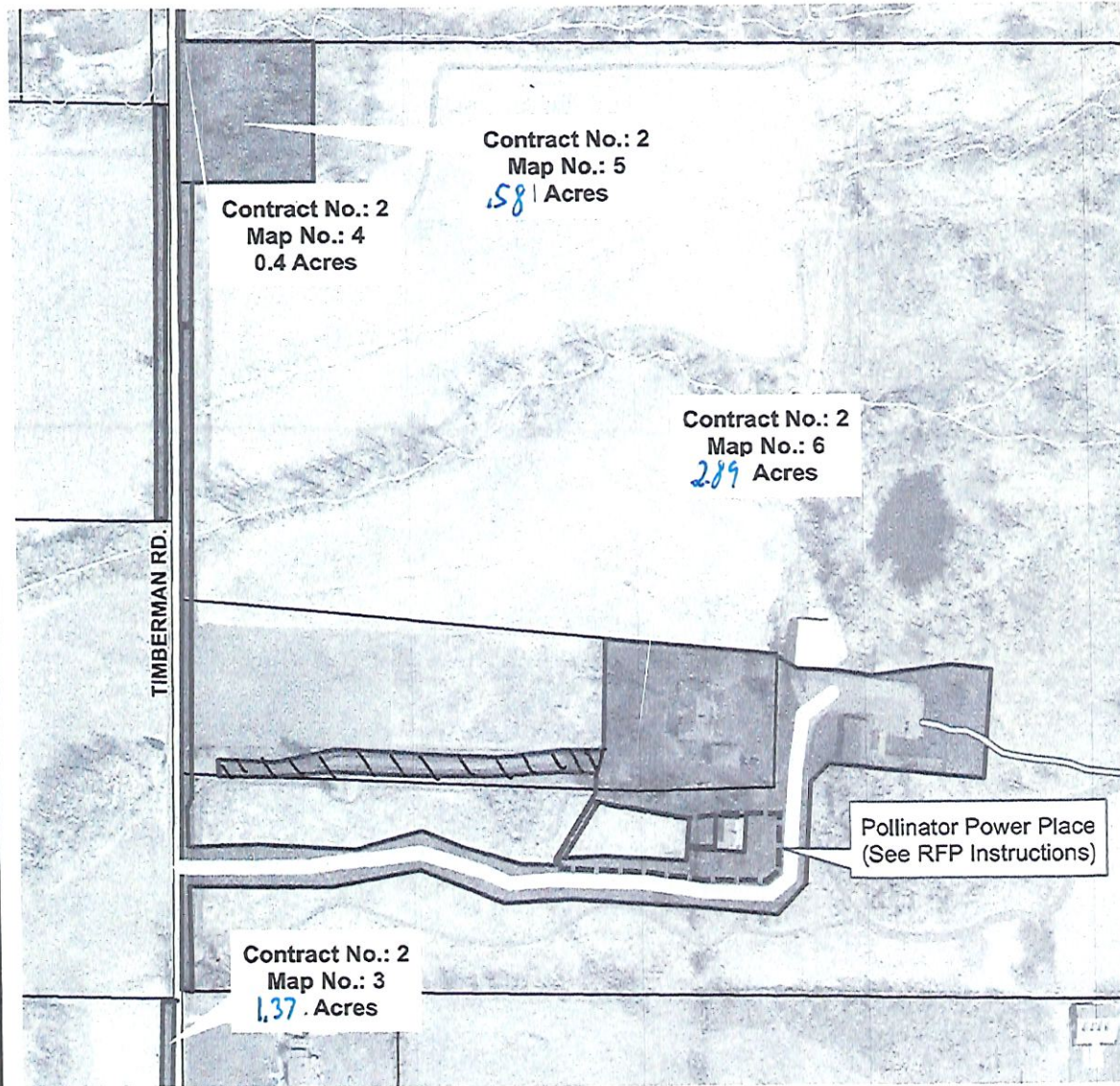
**MetroParks**  
of Butler County, OH

2051 Timberman Road, Hamilton, OH 45013  
www.YourMetroParks.net (513) 867-5835

ML 12/6/2022

Programming & Education





#### LEGEND

Mowing Areas

Contract No. 2

Roads

#### VICINITY MAP

Property Lines

Contractor to mow all lawn areas inside shaded areas which have been maintained as lawn previously.

Please see Contract Descriptions that coincide with each mapping area for more detailed information. Acreages shown are approximate and may include pavement areas. It is the Proposer's responsibility to visit and become familiar with each site prior to submitting a proposal.

SPECIAL INSTRUCTIONS:

## Mowing Map

Contract No. 2, Map No. 6

Site Address: 1976 Timberman Road  
Hamilton, OH 45013

0 125 250 500 750 Feet

GRAPHIC SCALE



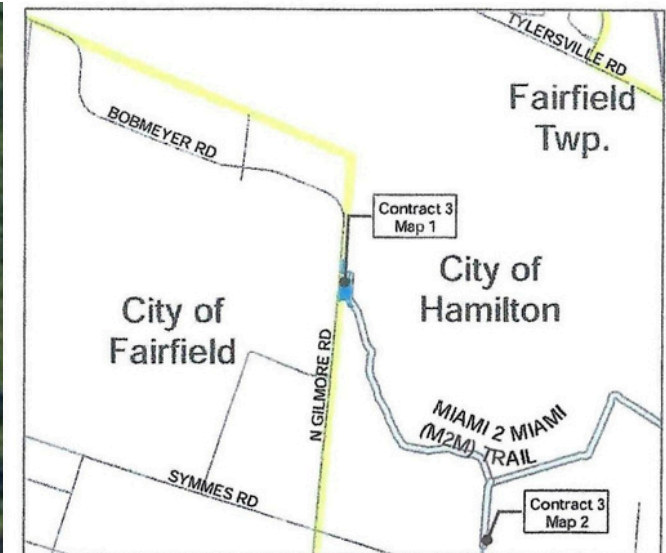
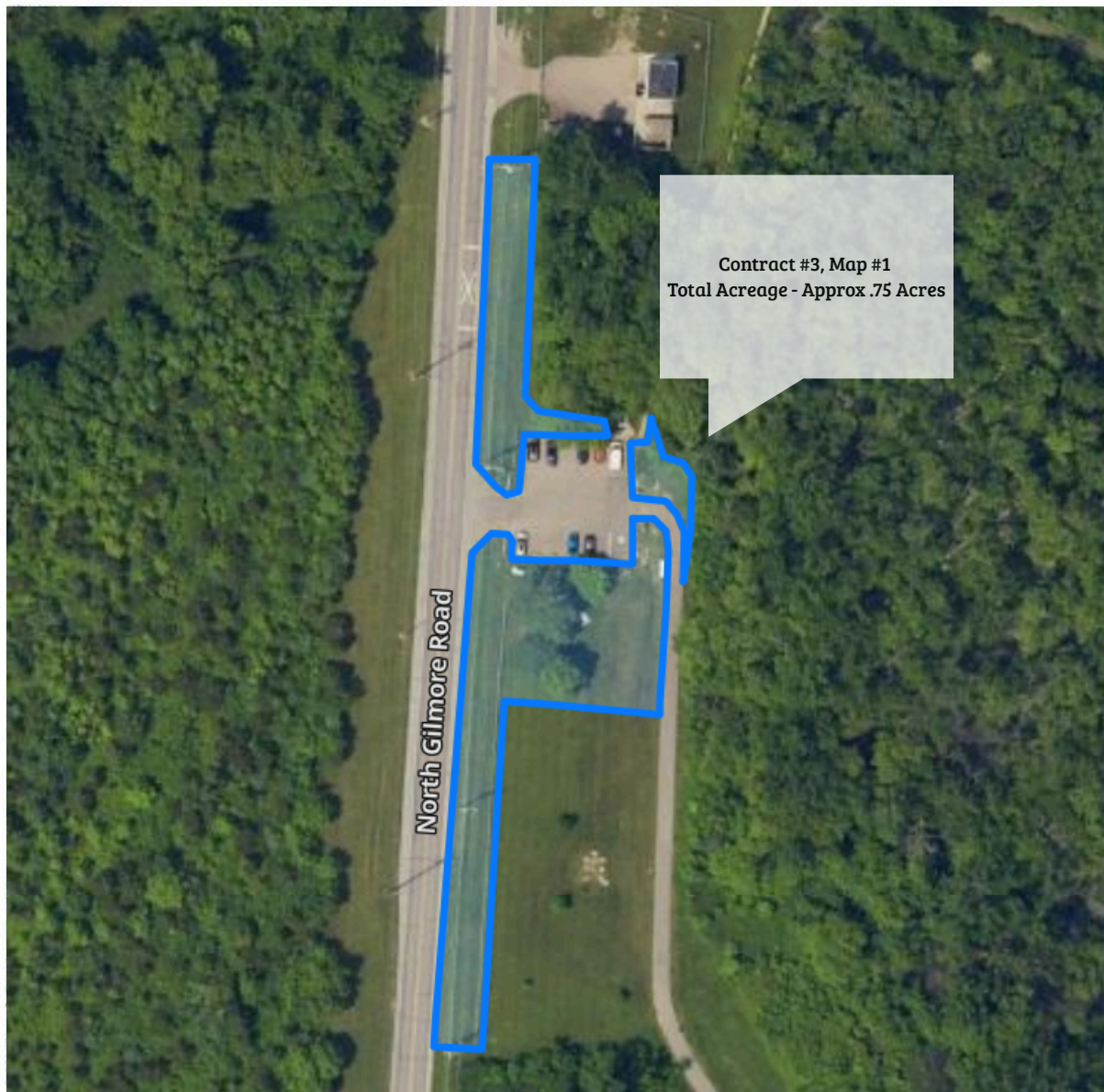
**MetroParks**  
of Butler County, OH

2051 Timberman Road, Hamilton, OH 45013  
[www.YourMetroParks.net](http://www.YourMetroParks.net) (513) 867-5835

ML 12/6/2022

*Timberman Ridge Administrative Offices*





#### LEGEND

Mowing Areas

Contract No. 3

Roads

Property Lines

#### VICINITY MAP

Contractor to mow all lawn areas inside shaded areas which have been maintained as lawn previously.

Please see Contract Descriptions that coincide with each mapping area for more detailed information. Acreages shown are approximate and may include pavement areas. It is the Proposer's responsibility to visit and become familiar with each site prior to submitting a proposal.

#### SPECIAL INSTRUCTIONS:

**Mow 3 feet on each side of the M2M trail per Contract No. 3, Map No. 4**

## Mowing Map

Contract No. 3, Map No. 1  
Gilmore Ponds Metropark  
N. Gilmore Road Entrance

Site Address: 7950 N. Gilmore Road  
Hamilton Ohio, 45015

0 75 150 300 450 Feet

GRAPHIC SCALE

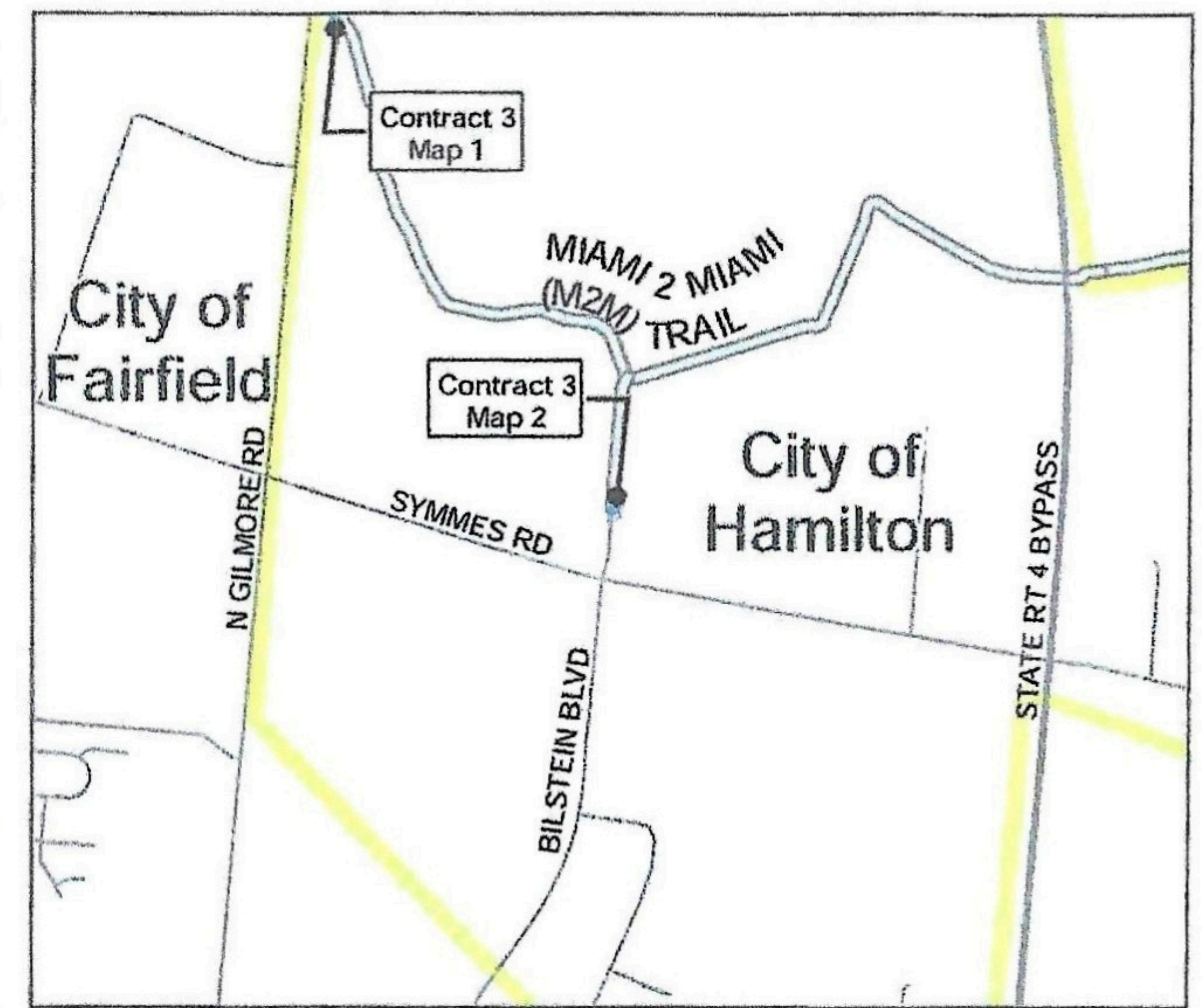


ML 12/6/2022



2051 Timberman Road, Hamilton, OH 45013  
www.YourMetroParks.net (513) 867-5835





#### LEGEND

Mowing Areas

Contract No. 3

Roads

Property Lines

#### VICINITY MAP

Contractor to mow all lawn areas inside shaded areas which have been maintained as lawn previously.

Please see Contract Descriptions that coincide with each mapping area for more detailed information. Acreages shown are approximate and may include pavement areas. It is the Proposer's responsibility to visit and become familiar with each site prior to submitting a proposal.

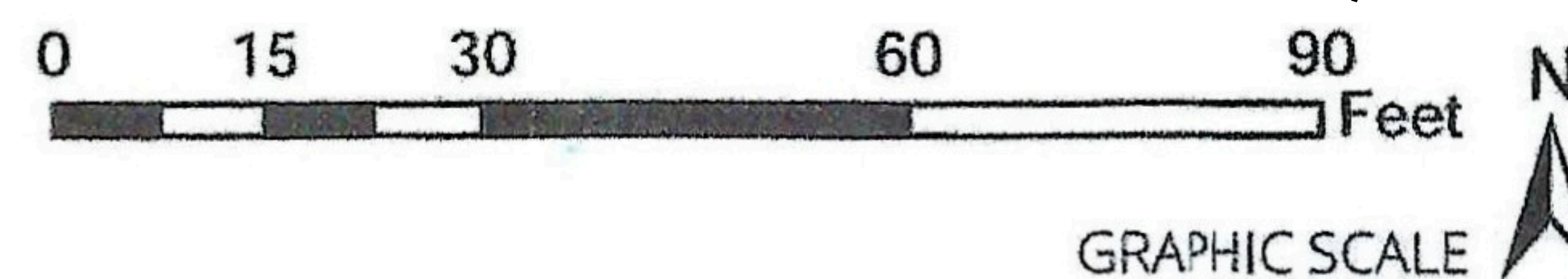
#### SPECIAL INSTRUCTIONS:

**Mow 3 feet on each sides of the M2M trail per Contract No. 3, Map No. 4**

#### Mowing Maps

Contract No. 3, Map No. 2  
Gilmore Ponds Metropark  
Bilstein Blvd. Entrance

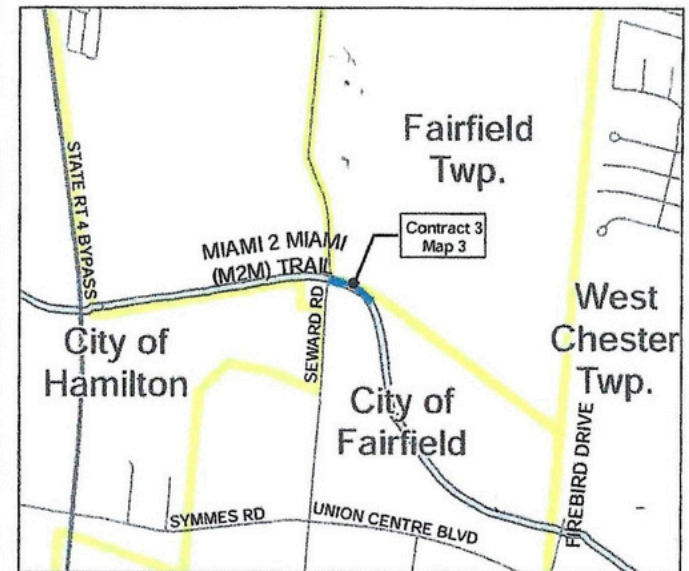
Site Address: 8300 Bilstein Blvd  
Hamilton Ohio, 45015



ML 12/6/2022

2051 Timberman Road, Hamilton, OH 45013  
www.YourMetroParks.net (513) 867-5835





#### LEGEND

Mowing Areas

Contract No. 3

Roads

Property Lines

#### VICINITY MAP

Contractor to mow all lawn areas inside shaded areas which have been maintained as lawn previously.

Please see Contract Descriptions that coincide with each mapping area for more detailed information. Acreages shown are approximate and may include pavement areas. It is the Proposer's responsibility to visit and become familiar with each site prior to submitting a proposal.

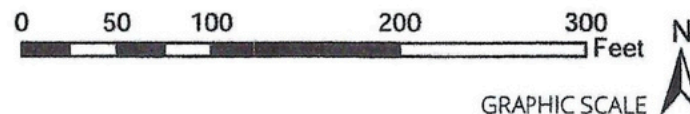
#### SPECIAL INSTRUCTIONS:

**Mow 3 feet on each side of the M2M trail per Contract No. 3, Map No. 4**

#### Mowing Maps

Contract No. 3, Map No. 3  
Gilmore Ponds Metropark  
Seward Road Trailhead

Site Address: 8290 Seward Road  
Fairfield, OH 45011



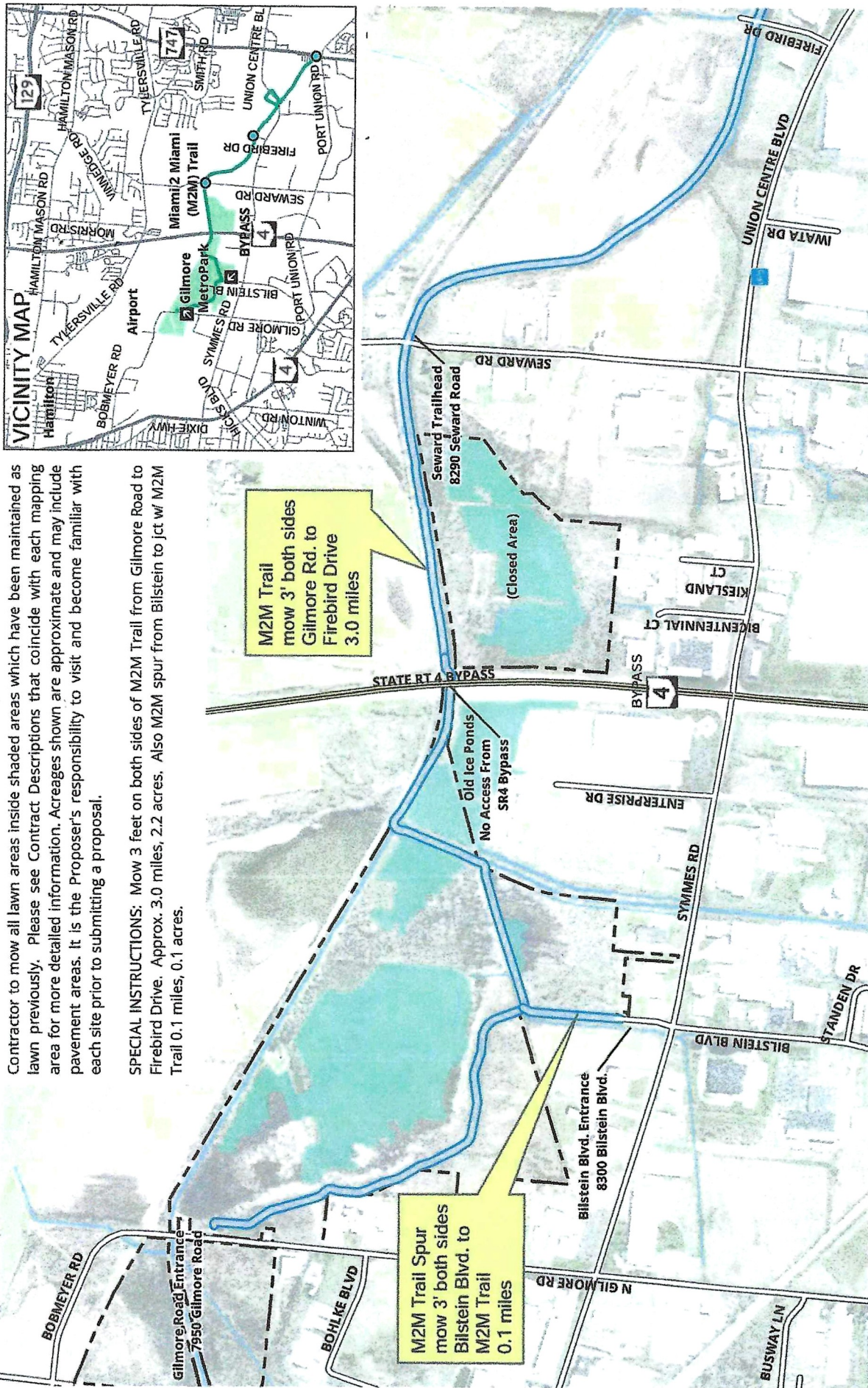
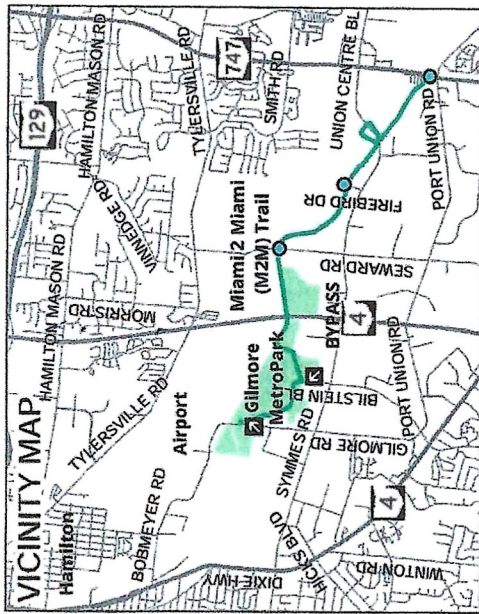
2051 Timberman Road, Hamilton, OH 45013  
www.YourMetroParks.net (513) 867-5835

ML 12/6/2022



Contractor to mow all lawn areas inside shaded areas which have been maintained as lawn previously. Please see Contract Descriptions that coincide with each mapping area for more detailed information. Acreages shown are approximate and may include pavement areas. It is the Proposer's responsibility to visit and become familiar with each site prior to submitting a proposal.

**SPECIAL INSTRUCTIONS:** Mow 3 feet on both sides of M2M Trail from Gilmore Road to Firebird Drive. Approx. 3.0 miles, 2.2 acres. Also M2M spur from Bilstein to jct w/ M2M Trail 0.1 miles, 0.1 acres.



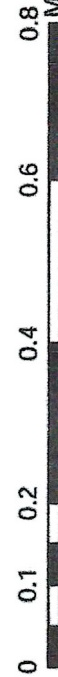
# Mowing Map

Contract No. 3

Map No. 4

Miami 2 Miami (M2M) Trail

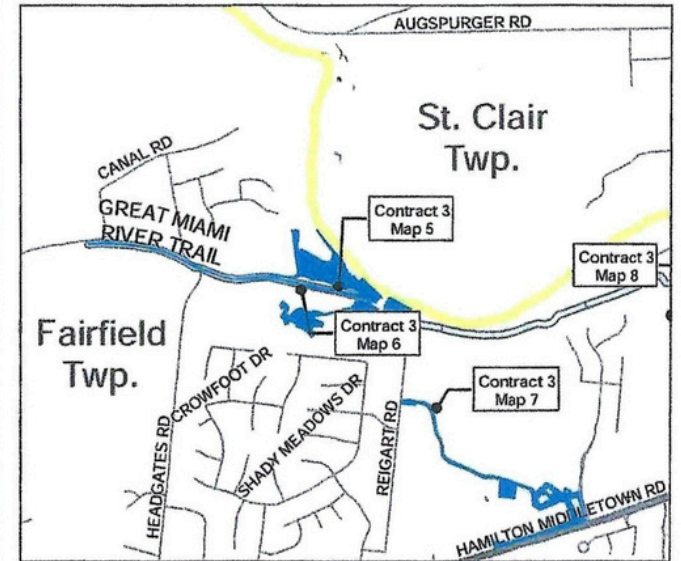
Site Address: 7950 Gilmore Road  
Hamilton, OH 45015



2051 Timberman Road, Hamilton, OH 45013  
www.YourMetroParks.net (513) 867-5835

ml 12/6/2022





#### LEGEND

Mowing Areas

Contract No. 3

Roads

Property Lines

#### VICINITY MAP

Contractor to mow all lawn areas inside shaded areas which have been maintained as lawn previously.

Please see Contract Descriptions that coincide with each mapping area for more detailed information. Acreages shown are approximate and may include pavement areas. It is the Proposer's responsibility to visit and become familiar with each site prior to submitting a proposal.

#### SPECIAL INSTRUCTIONS:

**Mow 3 feet on each side of GMRT per**

**Contract No. 3, Map No. 6.**

**Mow yard at 5787 Reigart Road - Approx .09 Acres**

## Mowing Map

### Contract No. 3, Map No. 5

### Rentschler Forest MetroPark

### Reigart Road Area

Site Address: 5701 Reigart Rd.  
Hamilton, OH 45011

0 200 400 800 1,200 Feet

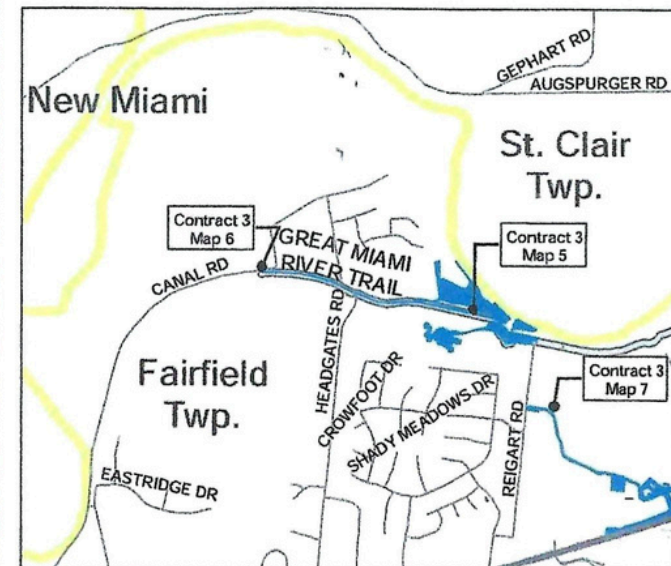
GRAPHIC SCALE



ML 12/6/2022

2051 Timberman Road, Hamilton, OH 45013  
www.YourMetroParks.net (513) 867-5835





# **LEGEND** **VICINITY MAP**

- Mowing Areas
- Contract No. 3
- Roads
- Property Lines

Contractor to mow all lawn areas inside shaded areas which have been maintained as lawn previously.

Please see Contract Descriptions that coincide with each mapping area for more detailed information. Acreages shown are approximate and may include pavement areas. It is the Proposer's responsibility to visit and become familiar with each site prior to submitting a proposal.

SPECIAL INSTRUCTIONS:

**Mowing Map**  
**Contract No. 3, Map No. 6**  
**Rentschler Forest MetroPark**  
**Great Miami River Trail South Area**

Site Address: 5701 Reigart Road  
 Hamilton, OH 45011



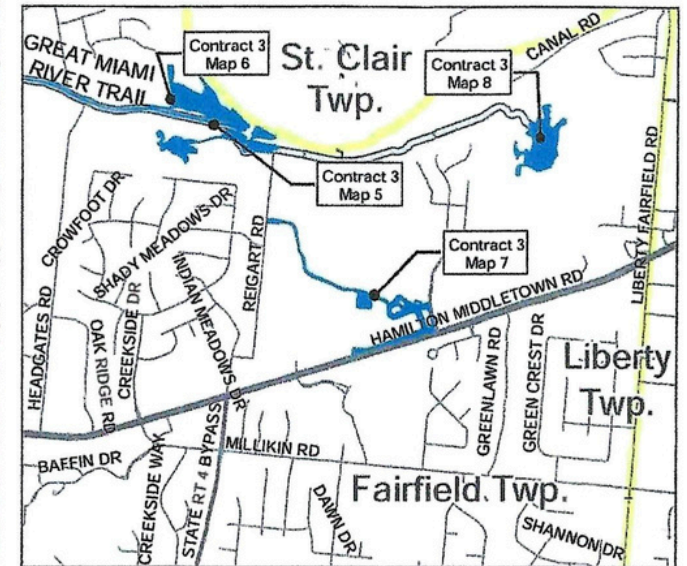
GRAPHIC SCALE



2051 Timberman Road, Hamilton, OH 45013  
[www.YourMetroParks.net](http://www.YourMetroParks.net) (513) 867-5835

ML 12/6/2022





## LEGEND VICINITY MAP

Mowing Areas

Property Lines

Contract No. 3

Roads

Contractor to mow all lawn areas inside shaded areas which have been maintained as lawn previously.

Please see Contract Descriptions that coincide with each mapping area for more detailed information. Acreages shown are approximate and may include pavement areas. It is the Proposer's responsibility to visit and become familiar with each site prior to submitting a proposal.

### SPECIAL INSTRUCTIONS:

Mow 3 feet on each side of the service driveway going to Reigart Road (.44 acres) and yards on either side of drive at Reigart Road (.19 acres).

## Mowing Maps

Contract No. 3, Map No. 7

Linehill Mound Metropark

Site Address: 3620 Hamilton-Middletown Rd.  
Hamilton, OH 45011

0 275 550 1,100 1,650 Feet

GRAPHIC SCALE

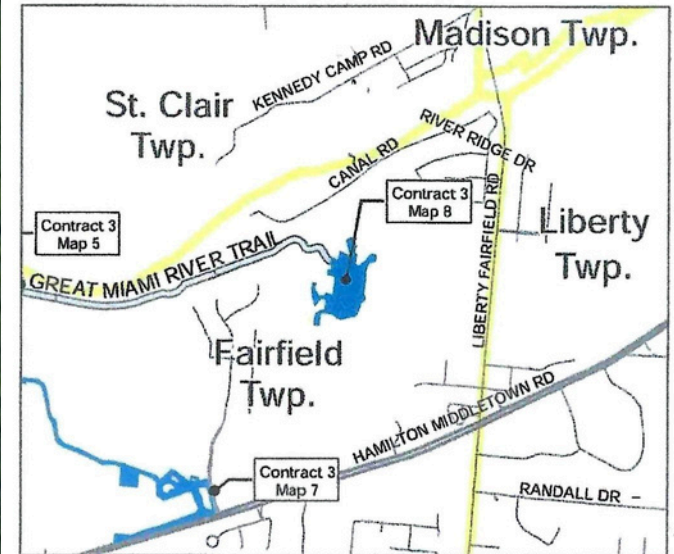


ML 12/6/2022

2051 Timberman Road, Hamilton, OH 45013  
www.YourMetroParks.net (513) 867-5835




Contract No. 3, Map No. 8  
Total Acreage - Approx 8.06 acres



#### LEGEND

Mowing Areas

 Contract No. 3

 Roads

 Property Lines

#### VICINITY MAP

Contractor to mow all lawn areas inside shaded areas which have been maintained as lawn previously.

Please see Contract Descriptions that coincide with each mapping area for more detailed information. Acreages shown are approximate and may include pavement areas. It is the Proposer's responsibility to visit and become familiar with each site prior to submitting a proposal.

#### SPECIAL INSTRUCTIONS:

**Mow 3 feet on each side of the GMRT  
from Timberhill to Boat Club Road (.9 miles)**

## Mowing Maps

Contract No. 3, Map No. 8  
Timberhill Metropark

Site Address: 5400 Timberhill Drive  
Hamilton Ohio, 45011



GRAPHIC SCALE

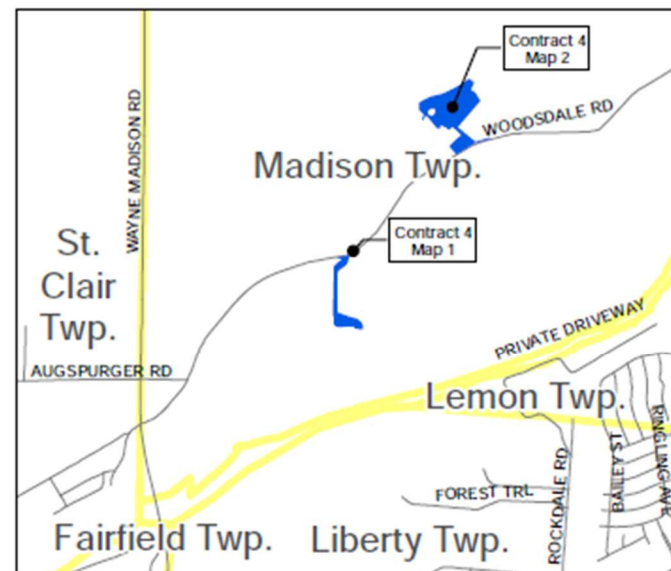
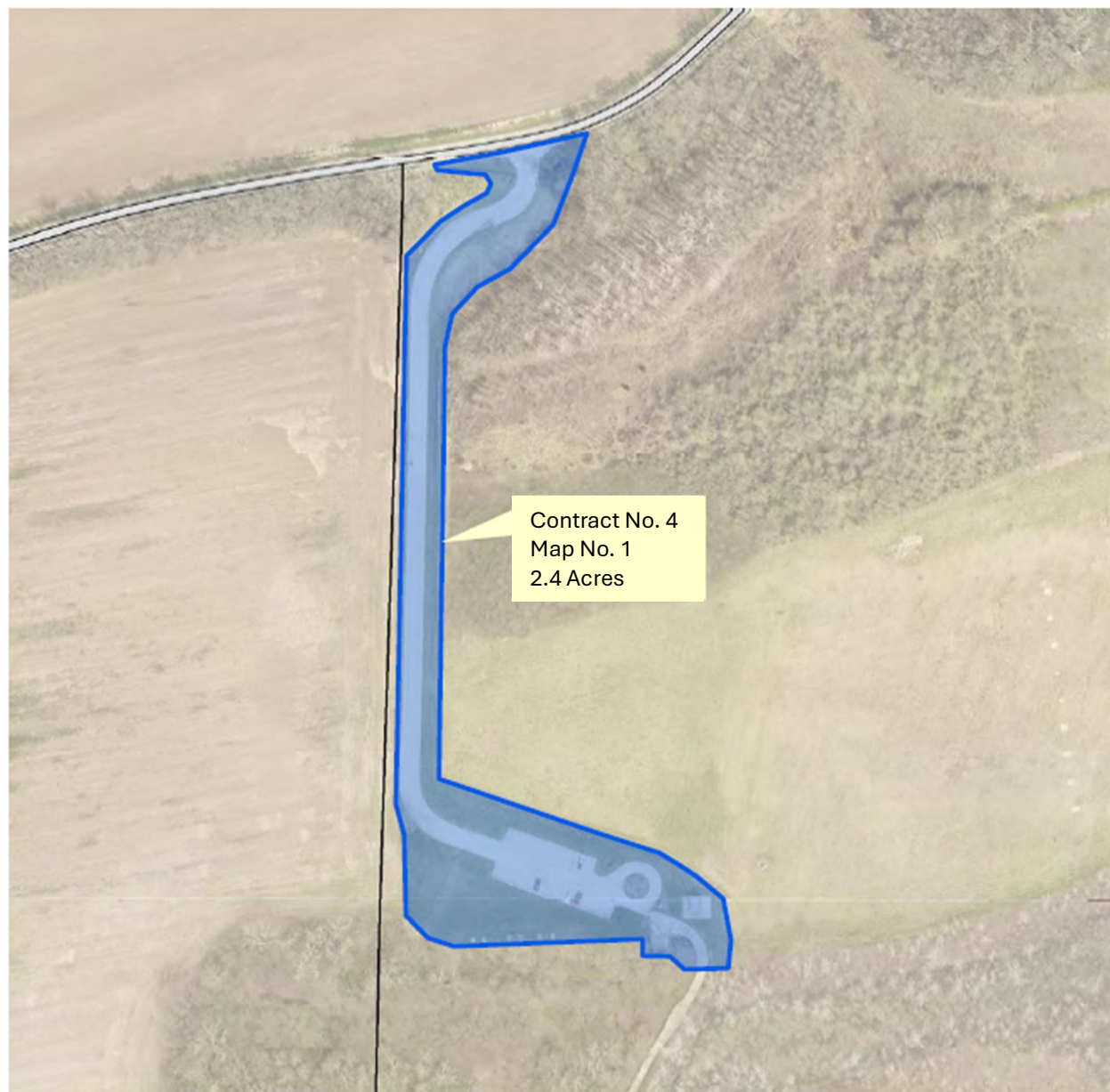


ML 12/6/2022



2051 Timberman Road, Hamilton, OH 45013  
www.YourMetroParks.net (513) 867-5835





#### LEGEND

Mowing Areas

 Contract No. 4

 Roads

 Property Lines

#### VICINITY MAP

Contractor to mow all lawn areas inside shaded areas which have been maintained as lawn previously.

Please see Contract Descriptions that coincide with each mapping area for more detailed information. Acreages shown are approximate and may include pavement areas. It is the Proposer's responsibility to visit and become familiar with each site prior to submitting a proposal.

SPECIAL INSTRUCTIONS:

**Mowing Map**  
**Contract No. 4, Map No. 1**  
**Woodsdale MetroPark**  
**Entrance Area**

Site Address: 1917 Woodsdale Rd.  
 Trenton, OH 45067

0 100 200 400 600 Feet

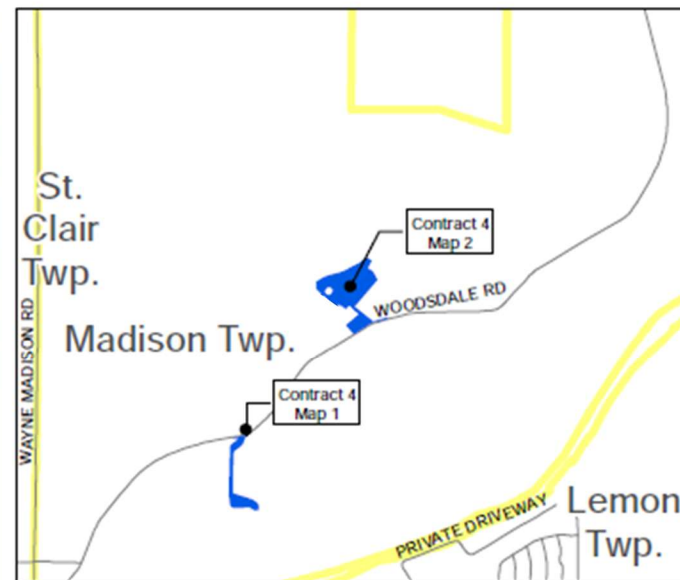
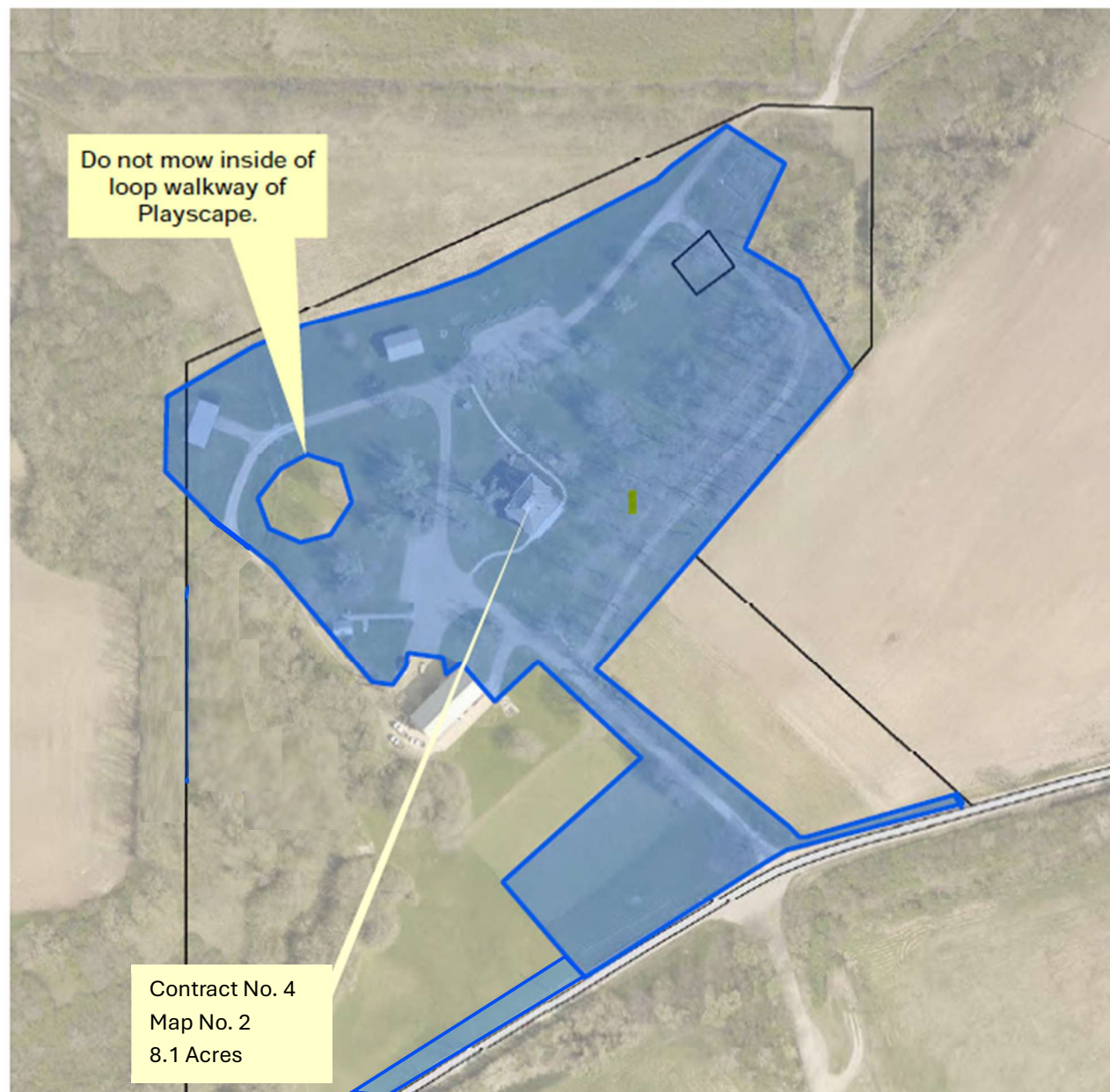
GRAPHIC SCALE



2051 Timberman Road, Hamilton, OH 45013  
[www.YourMetroParks.net](http://www.YourMetroParks.net) (513) 867-5835

ML 12/6/2022





#### LEGEND

Mowing Areas

Contract No. 4

Roads

Property Lines

#### VICINITY MAP

Contractor to mow all lawn areas inside shaded areas which have been maintained as lawn previously.

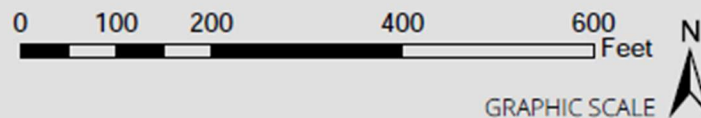
Please see Contract Descriptions that coincide with each mapping area for more detailed information. Acreages shown are approximate and may include pavement areas. It is the Proposer's responsibility to visit and become familiar with each site prior to submitting a proposal.

#### SPECIAL INSTRUCTIONS:

Cemetery grounds around gravestones and monuments shall be mowed with walk-behind mowers only.

**Mowing Map**  
**Contract No. 4, Map No. 2**  
**Chrisholm MetroPark**  
**Historic Farmstead Area**

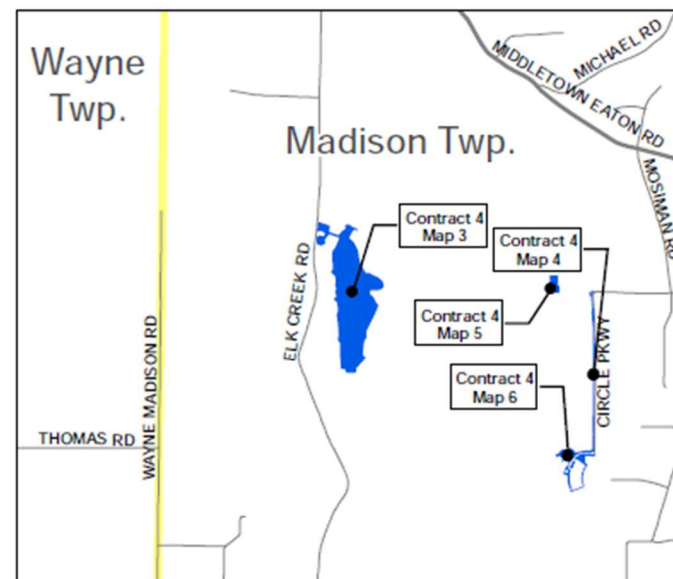
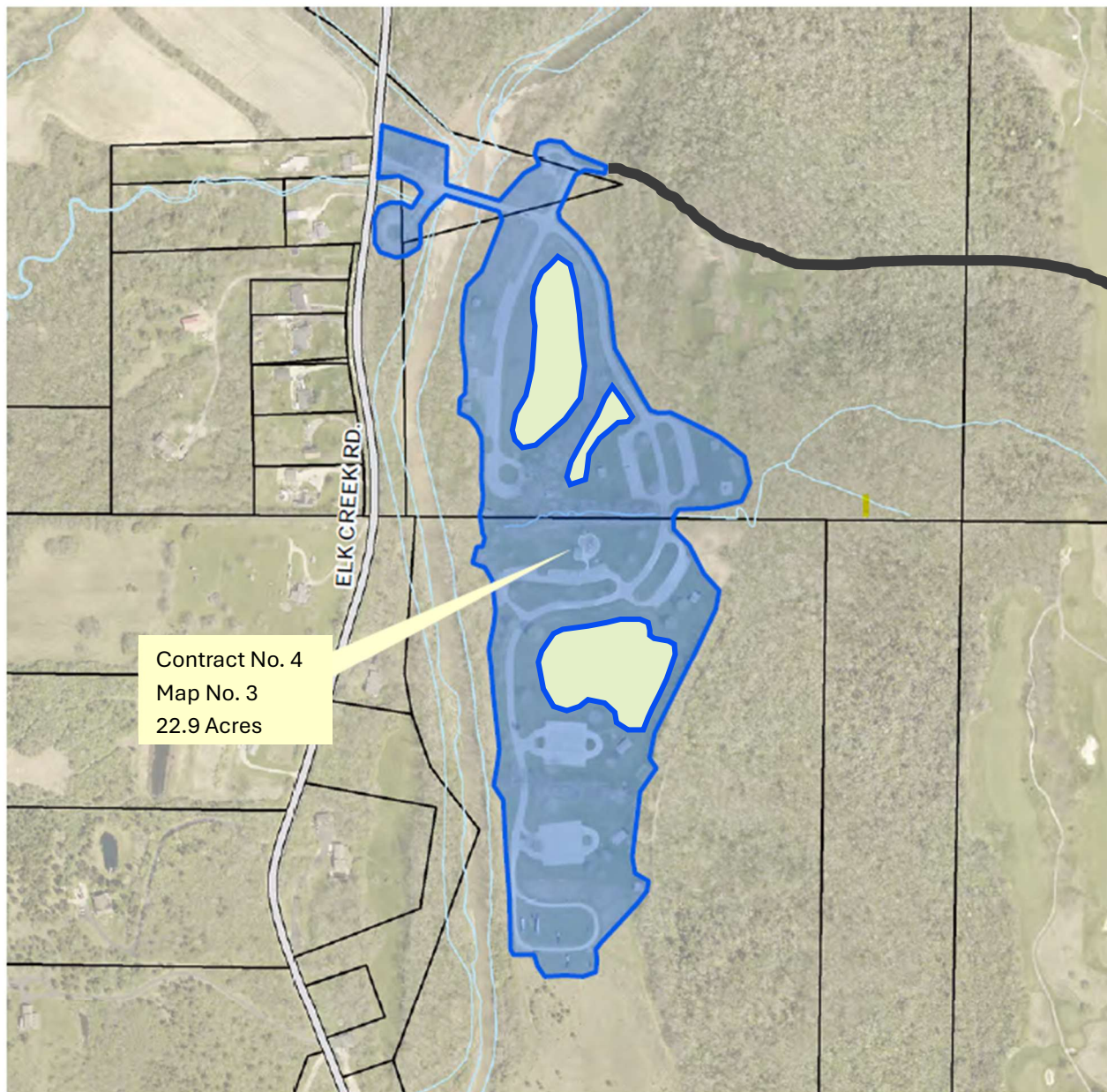
Site Address: 2070 Woodsdale Rd.  
 Trenton, OH 45067



ML 12/6/2022

 **MetroParks**  
 of Butler County, OH  
 2051 Timberman Road, Hamilton, OH 45013  
[www.YourMetroParks.net](http://www.YourMetroParks.net) (513) 867-5835





#### LEGEND

Mowing Areas

  Contract No. 4

Roads

  Property Lines

New park road connecting to Meadow Ridge MetroPark

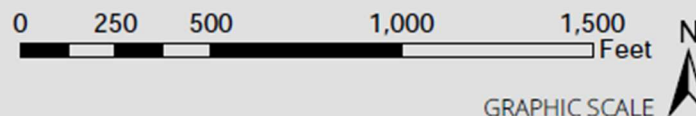
Contractor to mow all lawn areas inside shaded areas which have been maintained as lawn previously.

Please see Contract Descriptions that coincide with each mapping area for more detailed information. Acreages shown are approximate and may include pavement areas. It is the Proposer's responsibility to visit and become familiar with each site prior to submitting a proposal.

SPECIAL INSTRUCTIONS:

**Mowing Map**  
**Contract No. 4, Map No. 3**  
**Sebald MetroPark**

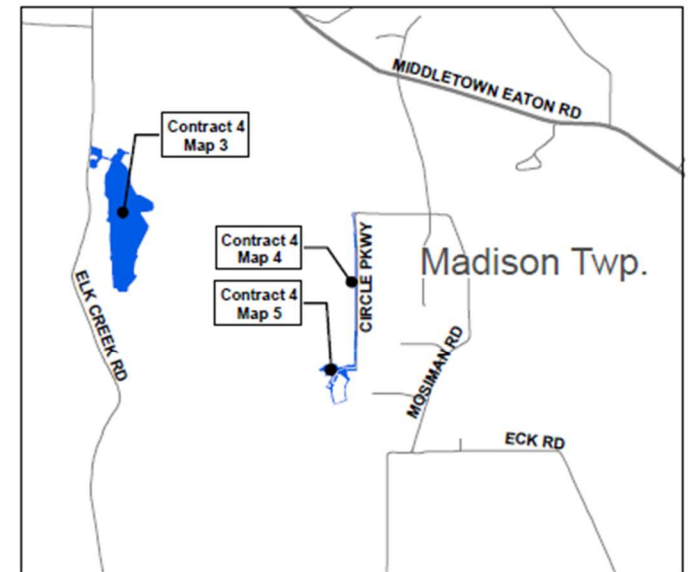
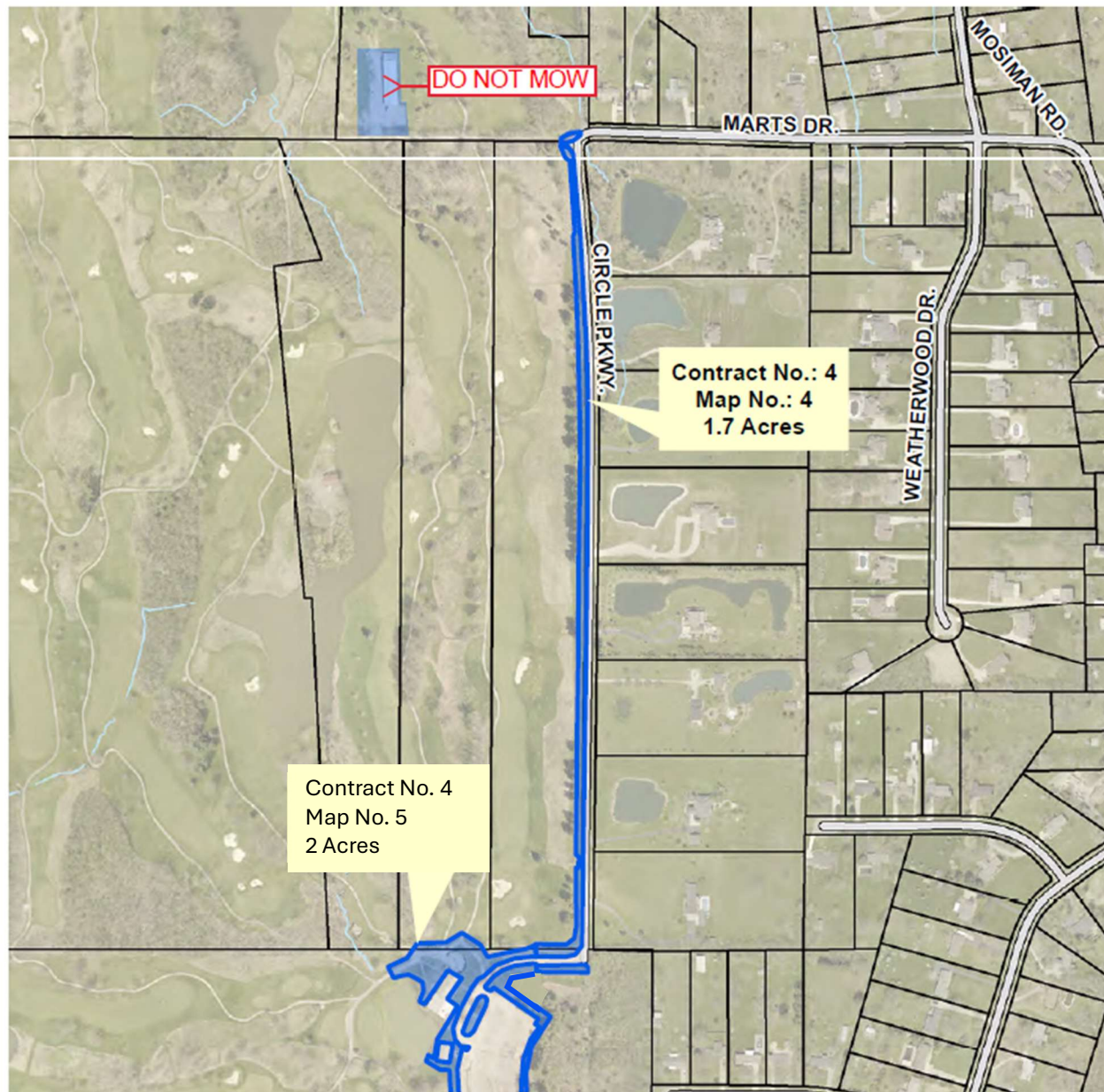
Site Address: 5580 Elk Creek Rd.  
 Middletown, OH 45042



2051 Timberman Road, Hamilton, OH 45013  
[www.YourMetroParks.net](http://www.YourMetroParks.net) (513) 867-5835

ML 12/6/2022






#### LEGEND

**Mowing Areas**

 Contract No. 4

 Roads

 Property Lines

#### VICINITY MAP

Contractor to mow all lawn areas inside shaded areas which have been maintained as lawn previously.

Please see Contract Descriptions that coincide with each mapping area for more detailed information. Acreages shown are approximate and may include pavement areas. It is the Proposer's responsibility to visit and become familiar with each site prior to submitting a proposal.

SPECIAL INSTRUCTIONS:

**Mowing Map**  
**Contract No. 4, Map No. 4**  
**Meadow Ridge MetroPark**  
 Roadway

Site Address: 5101 Circle Pkwy.  
 Middletown, OH 45042

0 275 550 1,100 1,650 Feet

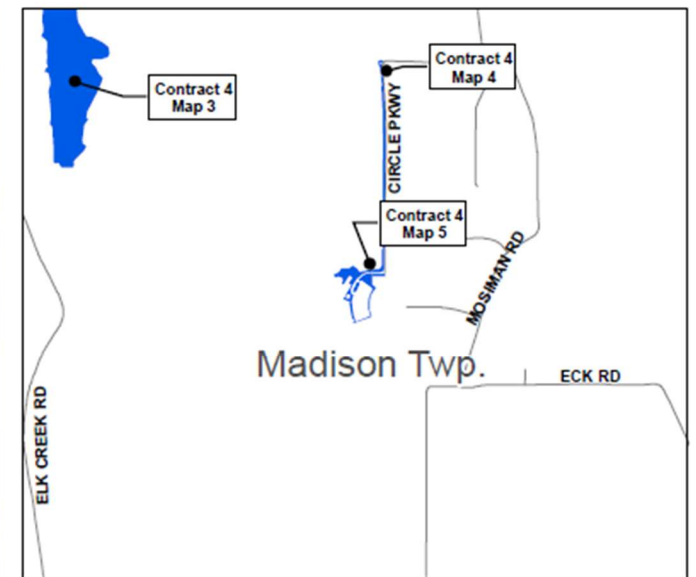
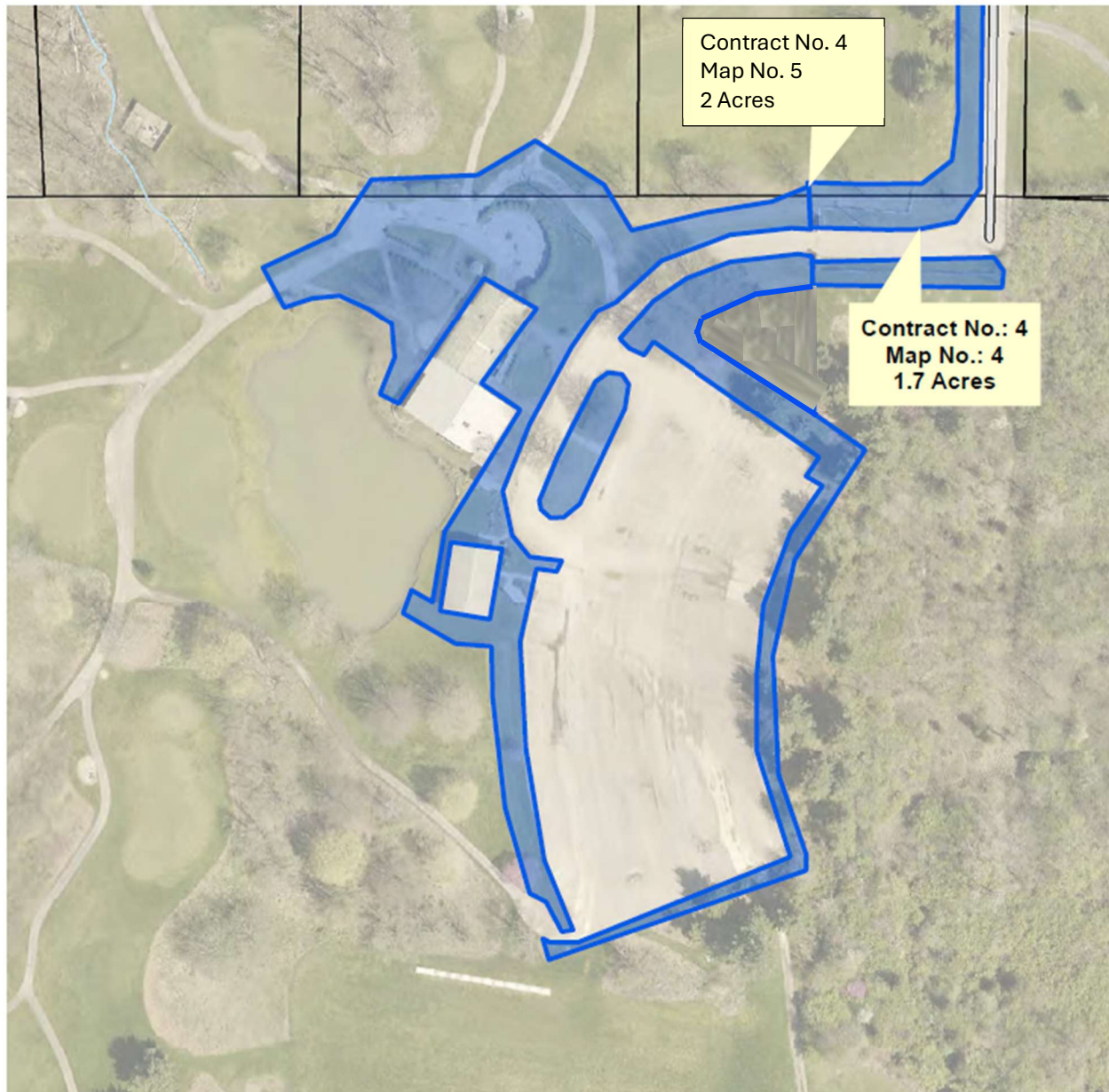
GRAPHIC SCALE



ML 12/6/2022

2051 Timberman Road, Hamilton, OH 45013  
[www.YourMetroParks.net](http://www.YourMetroParks.net) (513) 867-5835






#### LEGEND

##### Mowing Areas

 Contract No. 4

 Roads

 Property Lines

#### VICINITY MAP

Contractor to mow all lawn areas inside shaded areas which have been maintained as lawn previously.

Please see Contract Descriptions that coincide with each mapping area for more detailed information. Acreages shown are approximate and may include pavement areas. It is the Proposer's responsibility to visit and become familiar with each site prior to submitting a proposal.

SPECIAL INSTRUCTIONS:

**Mowing Map**  
**Contract No. 4, Map No. 5**  
**Meadow Ridge MetroPark**  
**South Entrance**

Site Address: 5101 Circle Parkway  
 Middletown, OH 45042

0 75 150 300 450 Feet

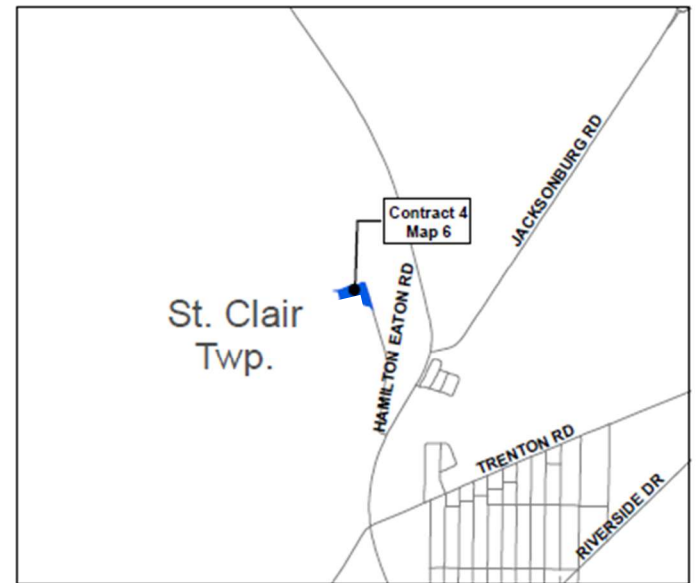
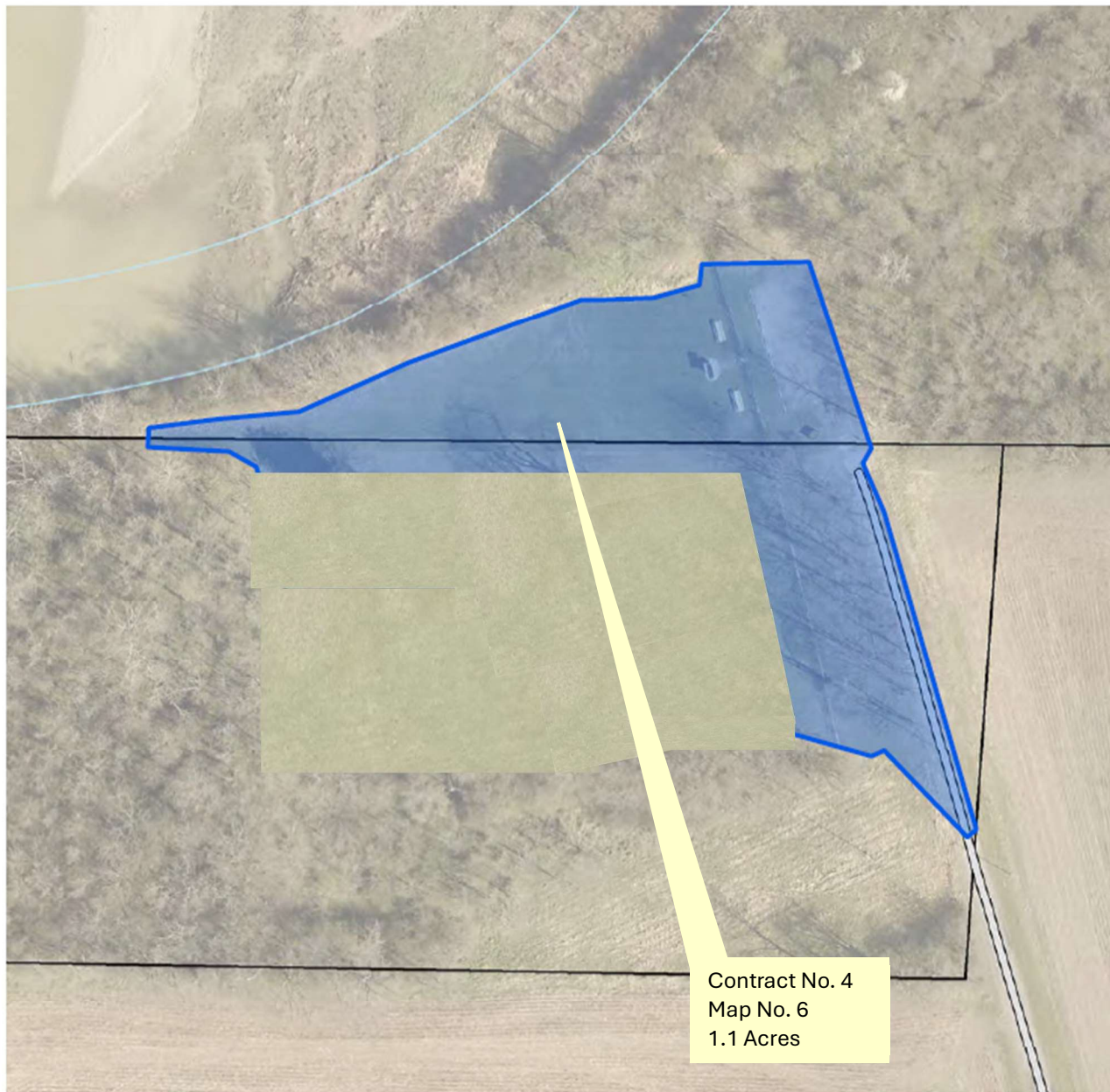
GRAPHIC SCALE



2051 Timberman Road, Hamilton, OH 45013  
[www.YourMetroParks.net](http://www.YourMetroParks.net) (513) 867-5835

ML 12/6/2022






#### LEGEND

##### Mowing Areas

 Contract No. 4

 Roads

 Property Lines

#### VICINITY MAP

Contractor to mow all lawn areas inside shaded areas which have been maintained as lawn previously.

Please see Contract Descriptions that coincide with each mapping area for more detailed information. Acreages shown are approximate and may include pavement areas. It is the Proposer's responsibility to visit and become familiar with each site prior to submitting a proposal.

SPECIAL INSTRUCTIONS:

## Mowing Map

Contract No. 4, Map No. 6

Antenen Nature Preserve MetroPark  
Entry Area

Site Address: 2385 Treiber Rd.  
Hamilton, OH 45011

0 50 100 200 300 Feet

GRAPHIC SCALE

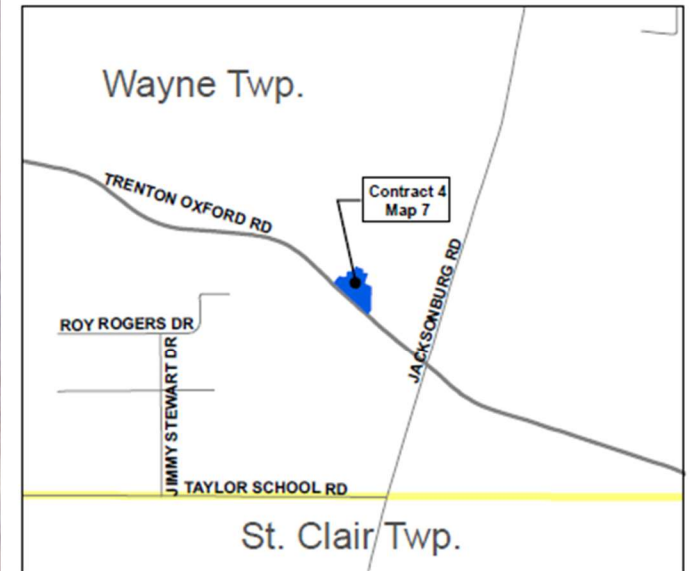


**MetroParks**  
of Butler County, OH

2051 Timberman Road, Hamilton, OH 45013  
www.YourMetroParks.net (513) 867-5835

ML 12/6/2022






#### LEGEND

**Mowing Areas**

 Contract No. 4

 Roads

 Property Lines

#### VICINITY MAP

Contractor to mow all lawn areas inside shaded areas which have been maintained as lawn previously.

Please see Contract Descriptions that coincide with each mapping area for more detailed information. Acreages shown are approximate and may include pavement areas. It is the Proposer's responsibility to visit and become familiar with each site prior to submitting a proposal.

SPECIAL INSTRUCTIONS:

## Mowing Map

Contract No. 4, Map No. 7

Angst Nature Preserve MetroPark  
Entry Area

Site Address: 4050 Trenton-Oxford Road  
Hamilton, OH 45011

0 50 100 200 300 Feet

GRAPHIC SCALE



ML 12/6/2022

2051 Timberman Road, Hamilton, OH 45013  
www.YourMetroParks.net (513) 867-5835



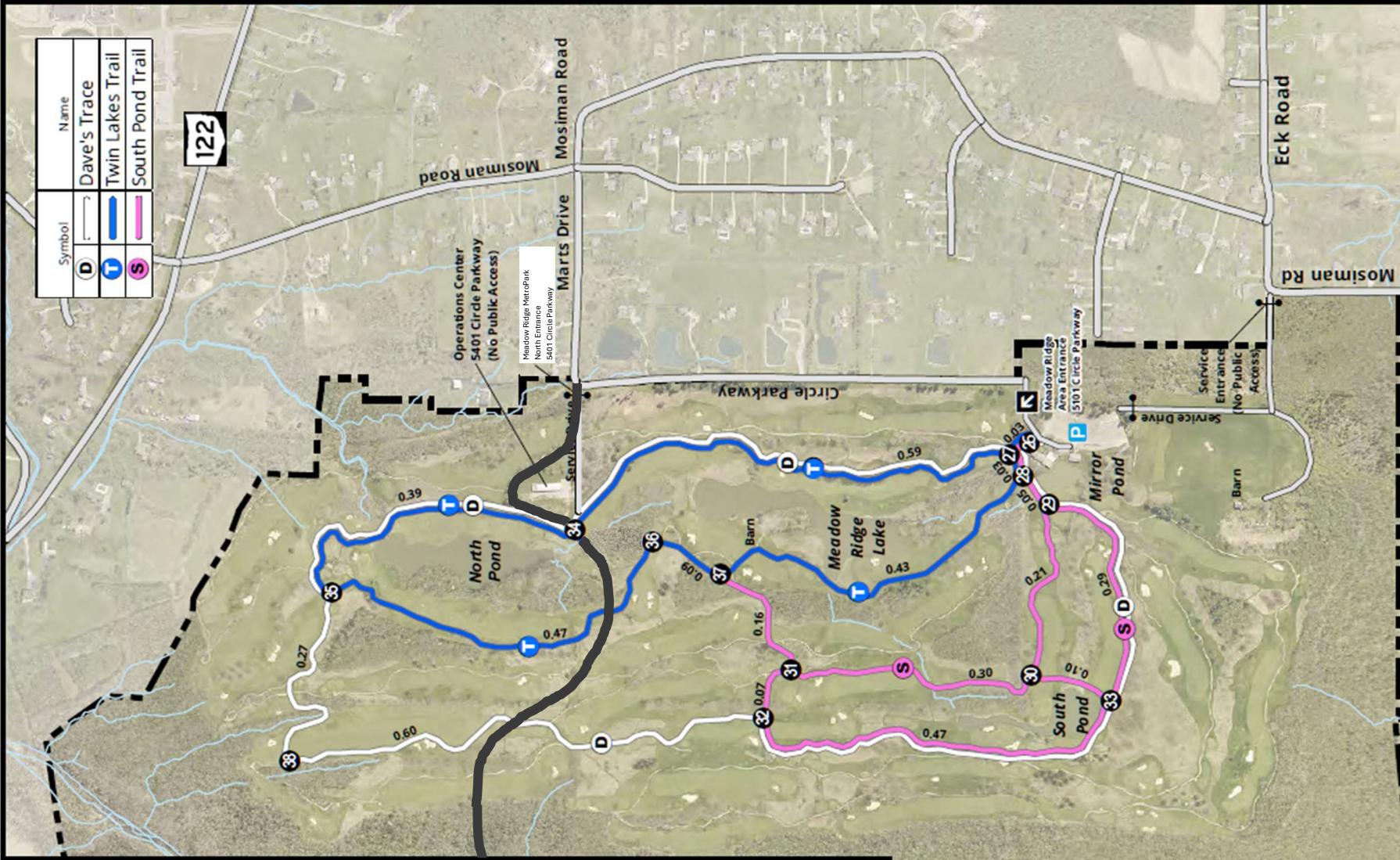
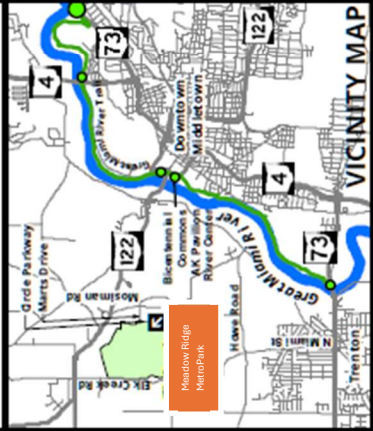
Contractor to mow all lawn areas inside shaded areas which have been maintained as lawn previously.

Please see Contract Descriptions that coincide with each mapping area for more detailed information. Acreages shown are approximate and may include pavement areas. It is the Proposer's responsibility to visit and become familiar with each site prior to submitting a proposal.

#### SPECIAL INSTRUCTIONS

Mow 3 feet on both sides of trails shown.  
Approx. 4.3 miles, 3.13 acres

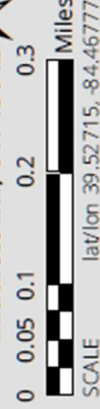
— New park road connecting  
to Sebalb MetroPark



## Mowing Map

Contract No. 4, Map No. 8  
Meadow Ridge MetroPark  
Trails

Site Address:  
5101 Circle Parkway  
Middletown, OH 45042

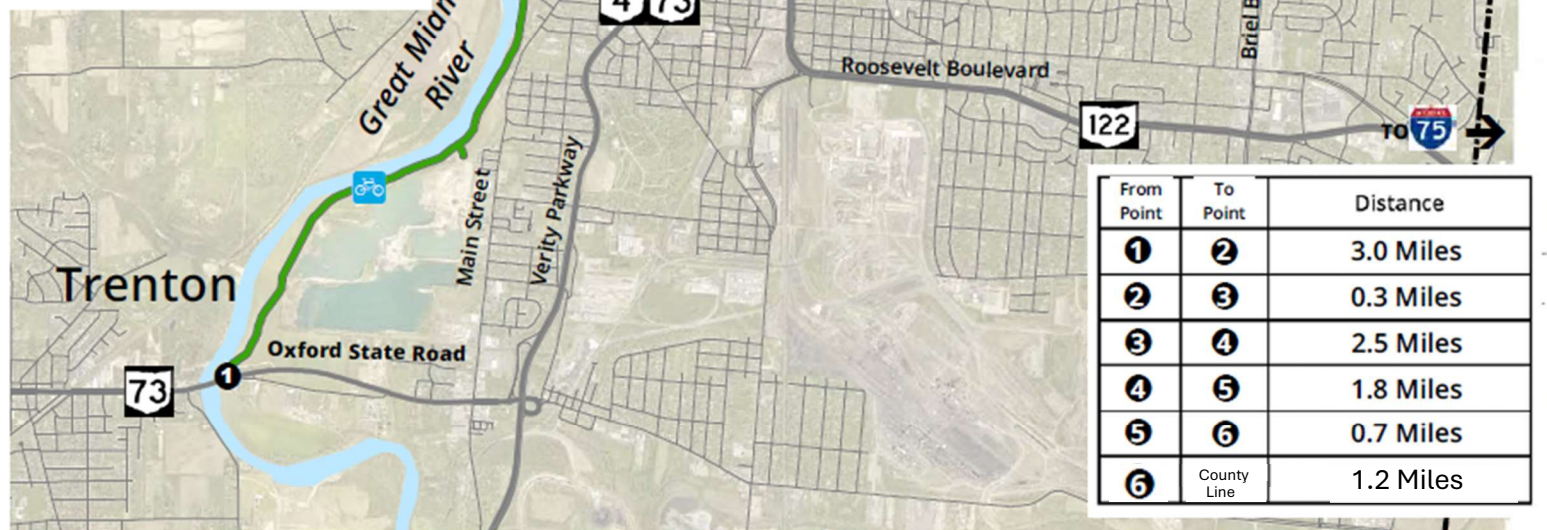


2051 Timberman Road, Hamilton, OH 45013  
www.YourMetroParks.net (513) 867-5835  
ML 10/7/2020



Contractor to mow all lawn areas inside shaded areas which have been maintained as lawn previously.

Please see Contract Descriptions that coincide with each mapping area for more detailed information. Acreages shown are approximate and may include pavement areas. It is the Proposer's responsibility to visit and become familiar with each site prior to submitting a proposal.



## LEGEND

- Great Miami River Trail (Mow 3 feet on both sides)
- Major Roads

Mow to County Line

## TRAILHEADS

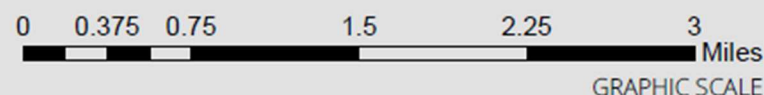
- Trenton Trailhead**  
 ① 50 Oxford State Road  
 Middletown, OH 45044  
 See Contract No. 5, Map No. 2
- River Center**  
 ② 120 South Carmody Boulevard  
 Middletown, OH 45044  
 See Contract No. 5, Map No. 3 & 8
- Columbia Trailhead**  
 ③ 26 North Carmody Boulevard  
 Middletown, OH 45042  
 See Contract No. 5, Map No. 4
- Eagle Trailhead**  
 ④ 2399 North Carmody Boulevard  
 Middletown, OH 45042  
 See Contract No. 5, Map No. 5
- Flyer Trailhead**  
 ⑤ 3801 North Verity Parkway  
 Middletown, OH 45042  
 See Contract No. 5, Map No. 6
- Miami Trailhead**  
 ⑥ 4401 North Verity Parkway  
 Middletown, OH 45042  
 See Contract No. 5, Map No. 7

| From Point | To Point    | Distance  |
|------------|-------------|-----------|
| ①          | ②           | 3.0 Miles |
| ②          | ③           | 0.3 Miles |
| ③          | ④           | 2.5 Miles |
| ④          | ⑤           | 1.8 Miles |
| ⑤          | ⑥           | 0.7 Miles |
| ⑥          | County Line | 1.2 Miles |

ml 1/28/2022

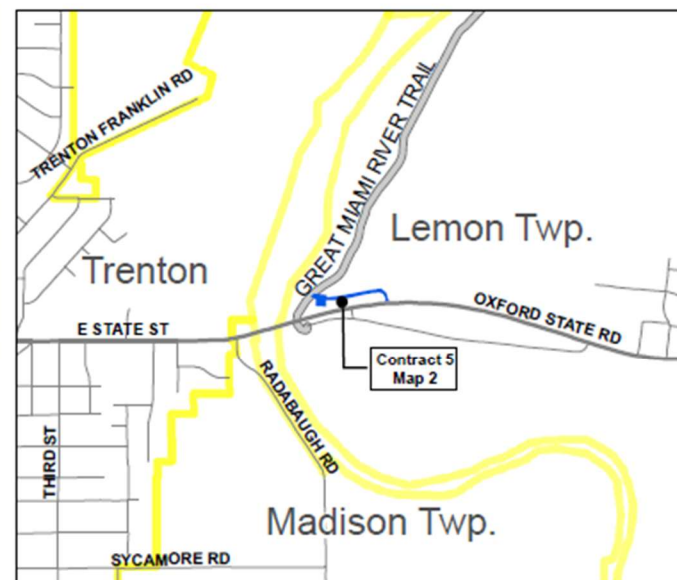
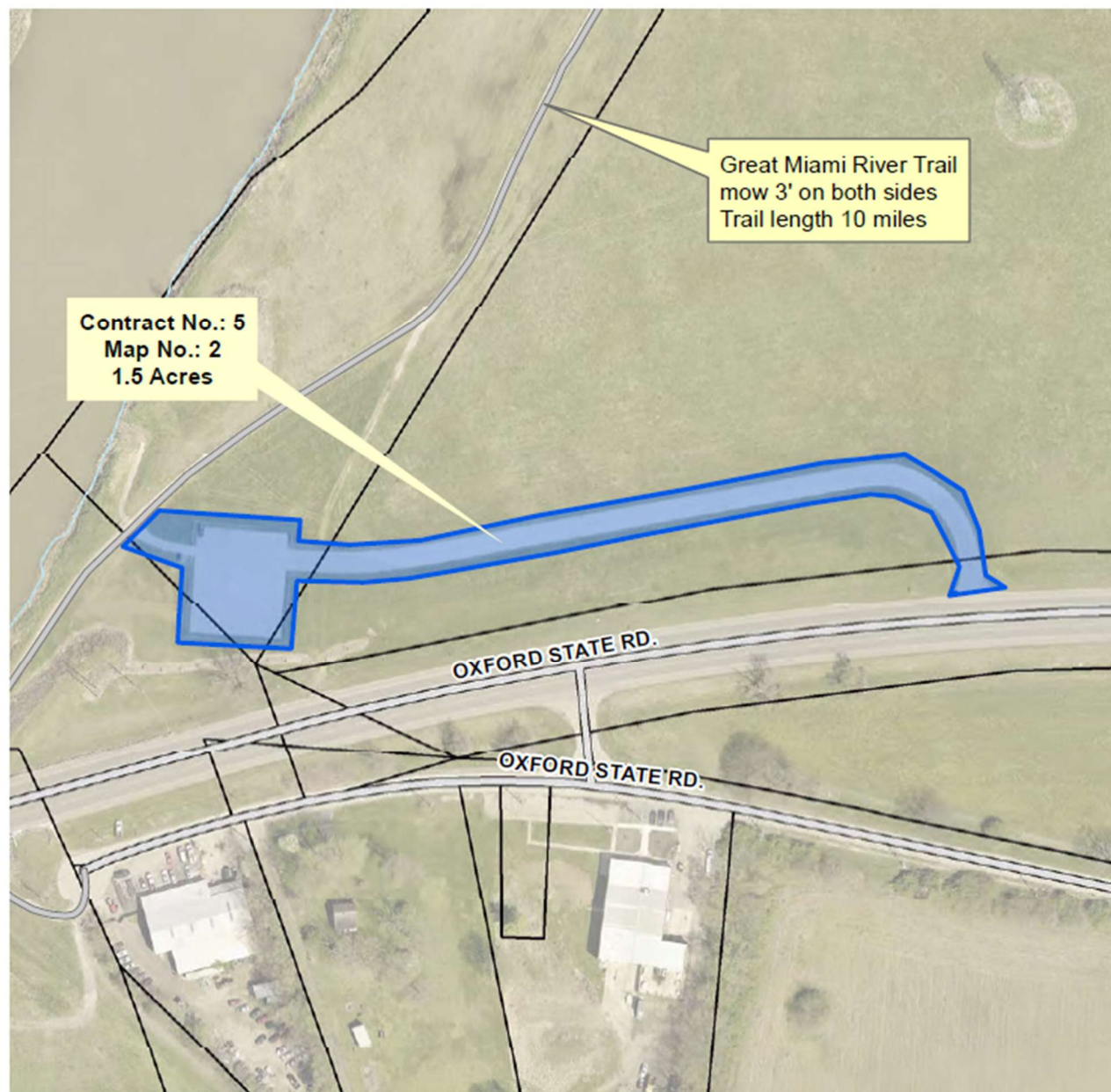
## Mowing Map

Contract No. 5, Map No. 1  
 Great Miami River Trail  
 Middletown Segment



2051 Timberman Road, Hamilton, OH 45013  
 www.YourMetroParks.net (513) 867-5835





#### LEGEND

##### Mowing Areas

Contract No. 5

Roads

Property Lines

#### VICINITY MAP

Contractor to mow all lawn areas inside shaded areas which have been maintained as lawn previously.

Please see Contract Descriptions that coincide with each mapping area for more detailed information. Acreages shown are approximate and may include pavement areas. It is the Proposer's responsibility to visit and become familiar with each site prior to submitting a proposal.

SPECIAL INSTRUCTIONS:

## Mowing Map

Contract No. 5, Map No. 2

Great Miami River Trail

Middletown Segment-Trenton Trailhead Area

Site Address: 50 Oxford State Rd.

Middletown, OH 45042

0 100 200 400 600 Feet

GRAPHIC SCALE

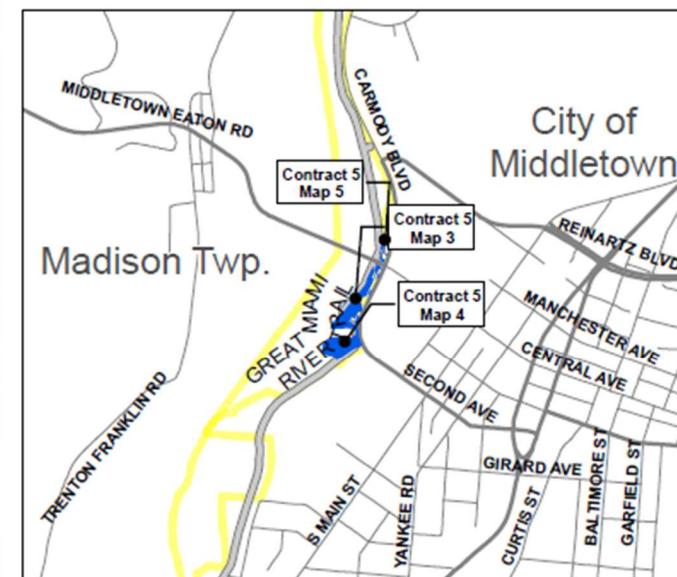
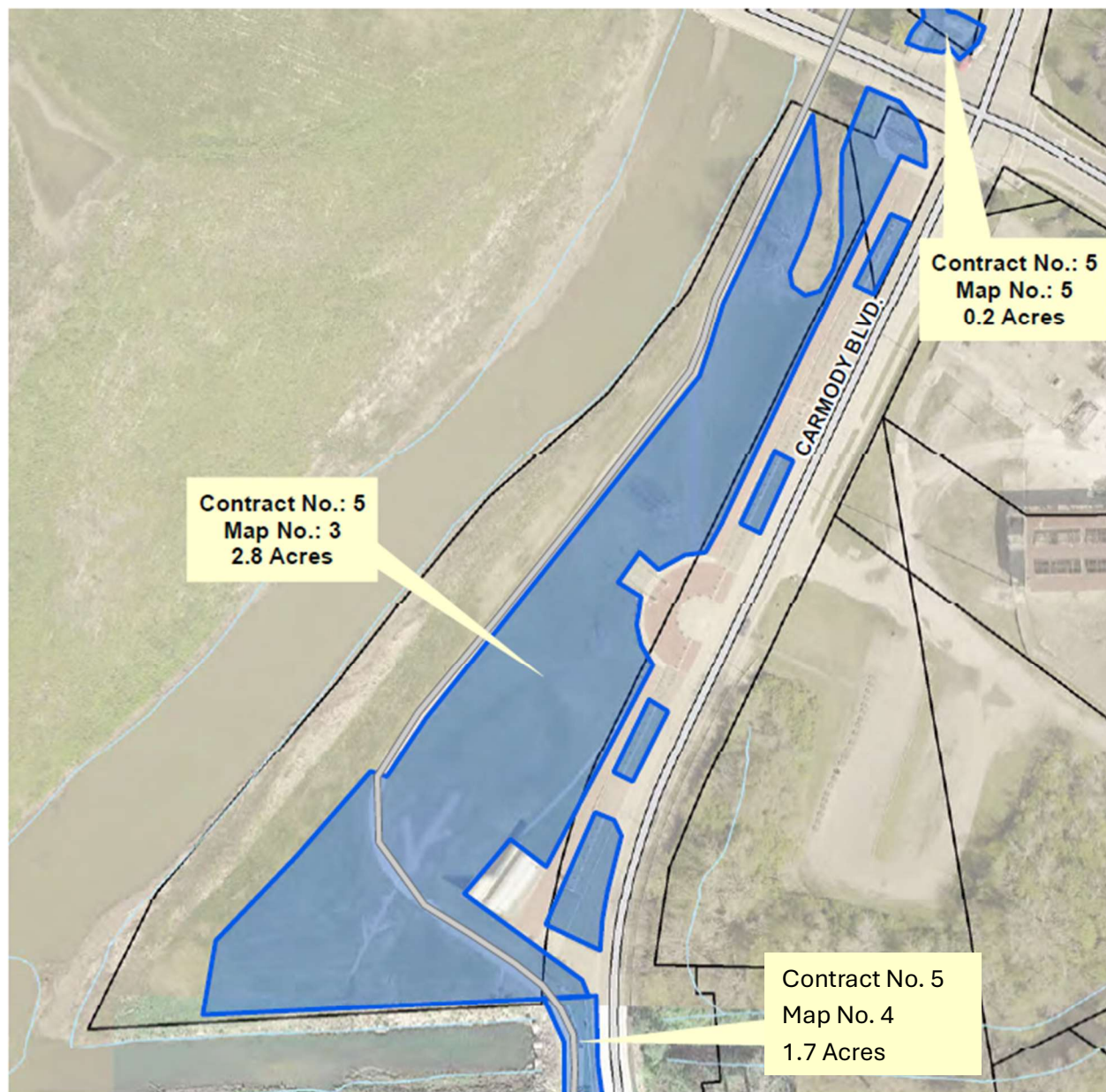


**MetroParks**  
of Butler County, OH

2051 Timberman Road, Hamilton, OH 45013  
www.YourMetroParks.net (513) 867-5835

ML 12/6/2022





#### LEGEND

Mowing Areas

Contract No. 5

Roads

Property Lines

#### VICINITY MAP

Contractor to mow all lawn areas inside shaded areas which have been maintained as lawn previously.

Please see Contract Descriptions that coincide with each mapping area for more detailed information. Acreages shown are approximate and may include pavement areas. It is the Proposer's responsibility to visit and become familiar with each site prior to submitting a proposal.

SPECIAL INSTRUCTIONS:

## Mowing Map

Contract No. 5, Map No. 3

Great Miami River Trail

Middletown Segment – Bicentennial Commons AK Pavilion Area

Site Address: 100 S. Carmody Blvd.

Middletown, OH 45044

0 75 150 300 450 Feet

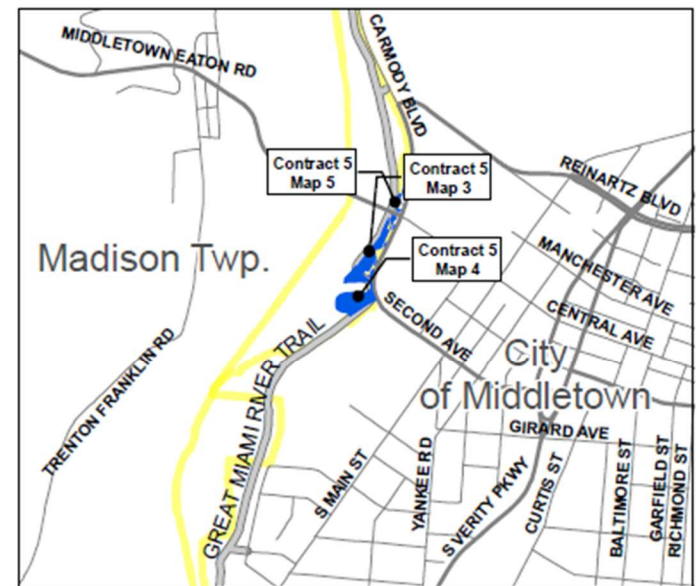
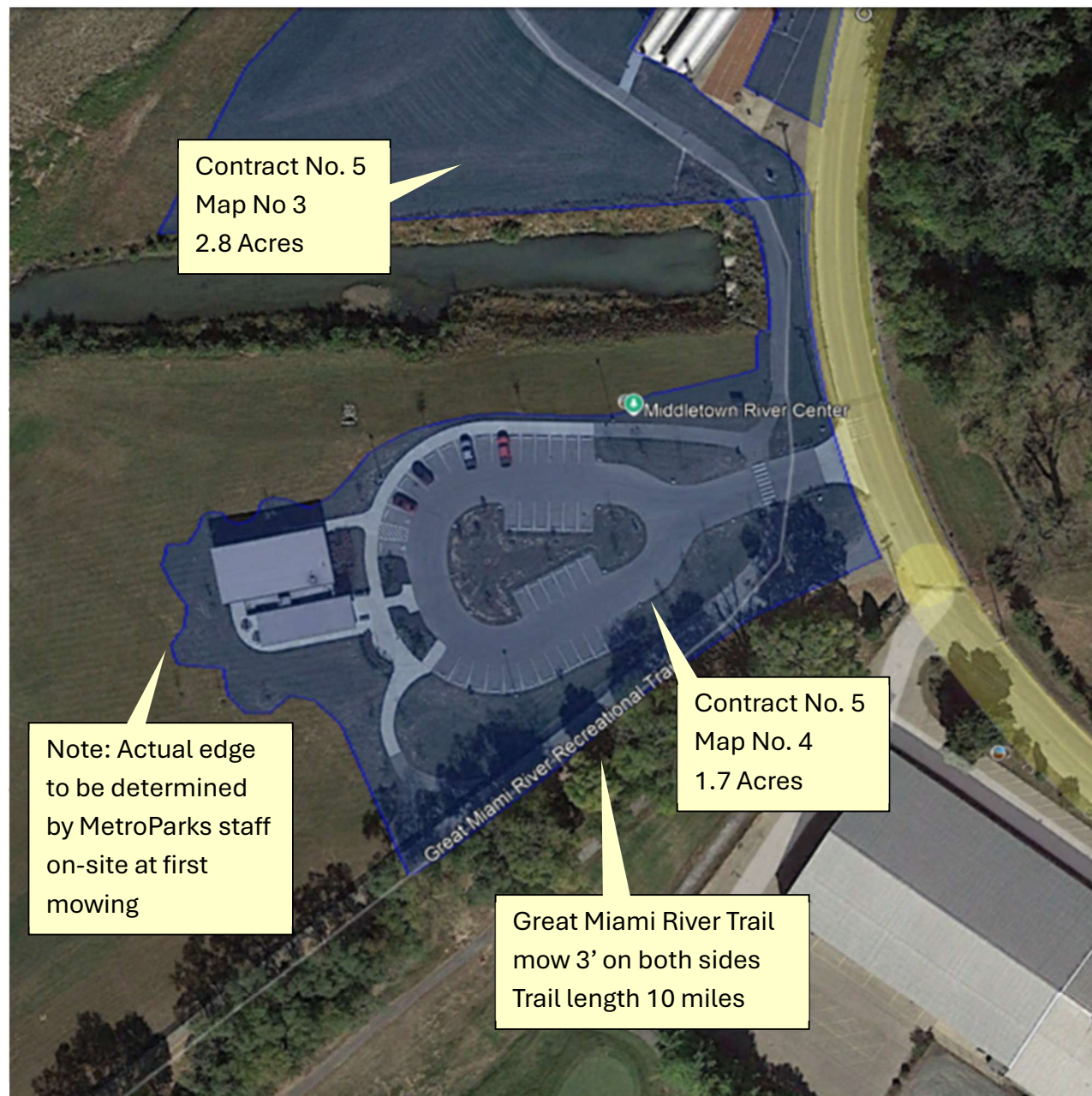
GRAPHIC SCALE



2051 Timberman Road, Hamilton, OH 45013  
www.YourMetroParks.net (513) 867-5835

ML 12/6/2022





## LEGEND

### Mowing Areas

Contract No. 5

Roads

Property Lines

## VICINITY MAP

Contractor to mow all lawn areas inside shaded areas which have been maintained as lawn previously.

Please see Contract Descriptions that coincide with each mapping area for more detailed information. Acreages shown are approximate and may include pavement areas. It is the Proposer's responsibility to visit and become familiar with each site prior to submitting a proposal.

SPECIAL INSTRUCTIONS:

## Mowing Map

Contract No. 5, Map No. 4

Great Miami River Trail

Middletown Segment-River Center Area

Site Address: 120 S. Carmody Boulevard  
Middletown, OH 45044

0 50 100 200 300 Feet

GRAPHIC SCALE



**MetroParks**  
of Butler County, OH

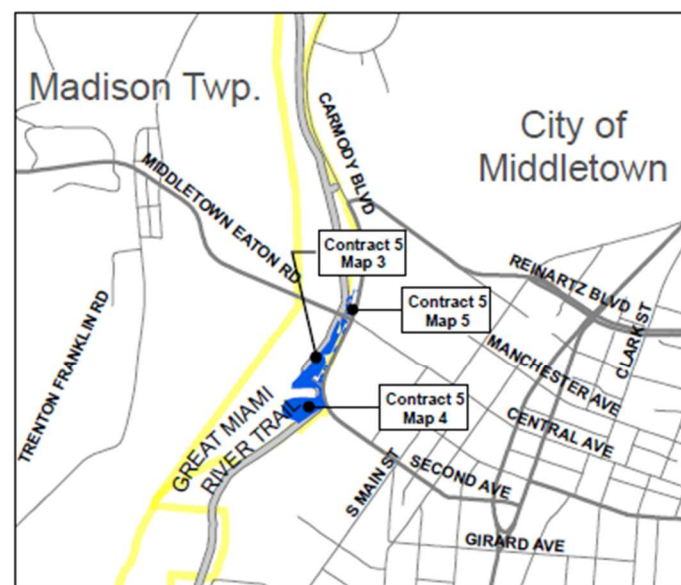
2051 Timberman Road, Hamilton, OH 45013  
www.YourMetroParks.net (513) 867-5835

ML 12/6/2022



Great Miami River Trail  
mow 3' on both sides  
Trail length 10 miles

Contract No.: 5  
Map No.: 5  
0.2 Acres



#### LEGEND

Mowing Areas

Contract No. 5

Roads

Property Lines

#### VICINITY MAP

Contractor to mow all lawn areas inside shaded areas which have been maintained as lawn previously.

Please see Contract Descriptions that coincide with each mapping area for more detailed information. Acreages shown are approximate and may include pavement areas. It is the Proposer's responsibility to visit and become familiar with each site prior to submitting a proposal.

SPECIAL INSTRUCTIONS:

## Mowing Map

Contract No. 5, Map No. 5

Great Miami River Trail

Middletown Segment-Columbia Trailhead Area

Site Address: 26 N. Carmody Blvd.  
Middletown, OH 45044

0 25 50 100 150 Feet

GRAPHIC SCALE

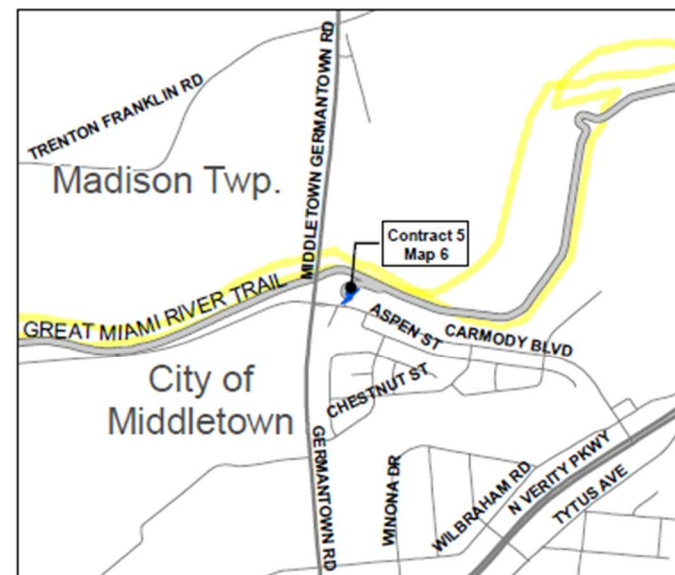
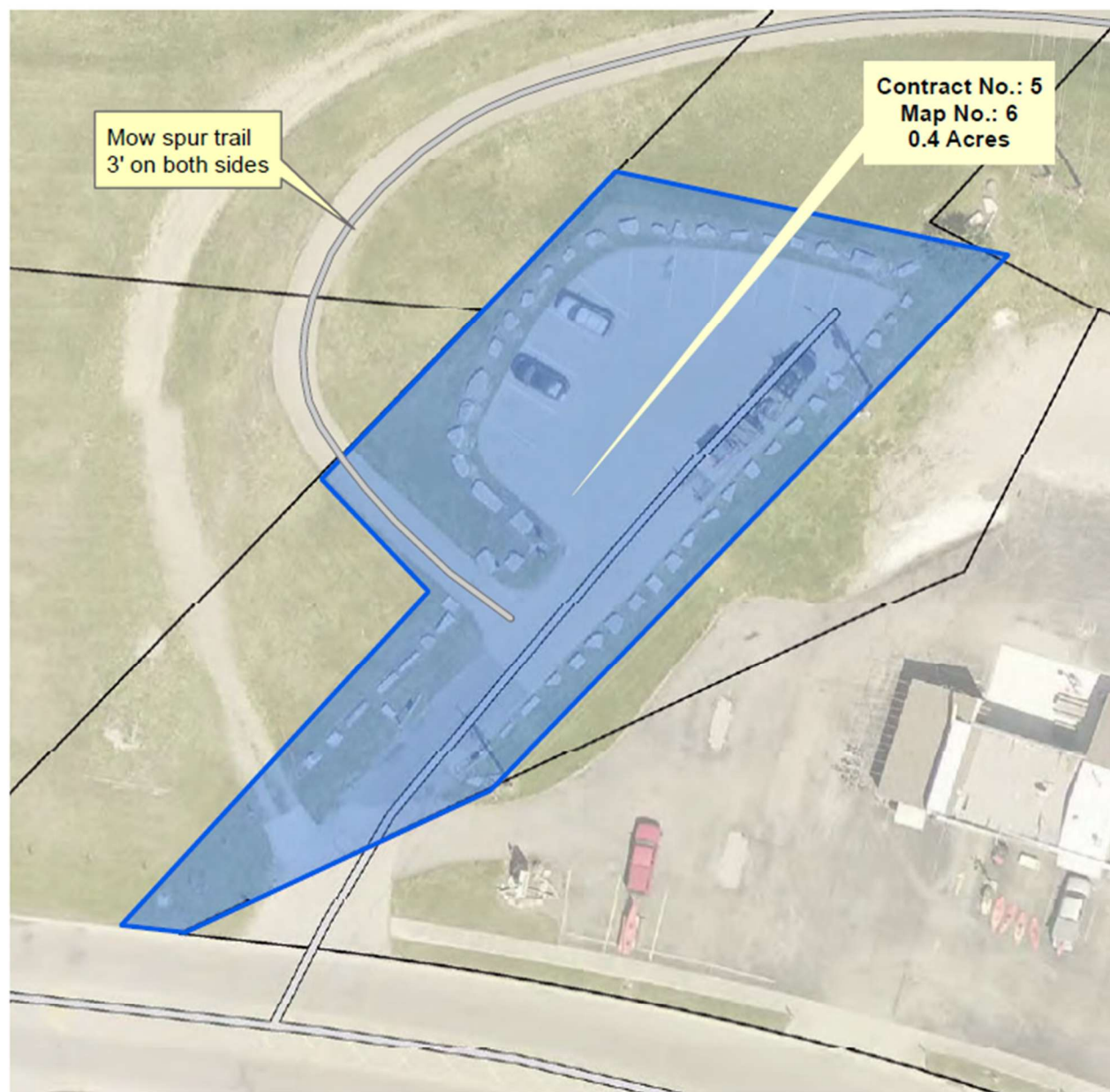


ML 12/6/2022



2051 Timberman Road, Hamilton, OH 45013  
www.YourMetroParks.net (513) 867-5835





#### LEGEND

#### Mowing Areas

Contract No. 5

Roads

Property Lines

#### VICINITY MAP

Contractor to mow all lawn areas inside shaded areas which have been maintained as lawn previously.

Please see Contract Descriptions that coincide with each mapping area for more detailed information. Acreages shown are approximate and may include pavement areas. It is the Proposer's responsibility to visit and become familiar with each site prior to submitting a proposal.

SPECIAL INSTRUCTIONS:

## Mowing Map

Contract No. 5, Map No. 6

Great Miami River Trail

Middletown Segment-Eagle Trailhead Area

Site Address: 2399 N. Carmody Blvd.  
Middletown, OH 45044

0 20 40 80 120 Feet

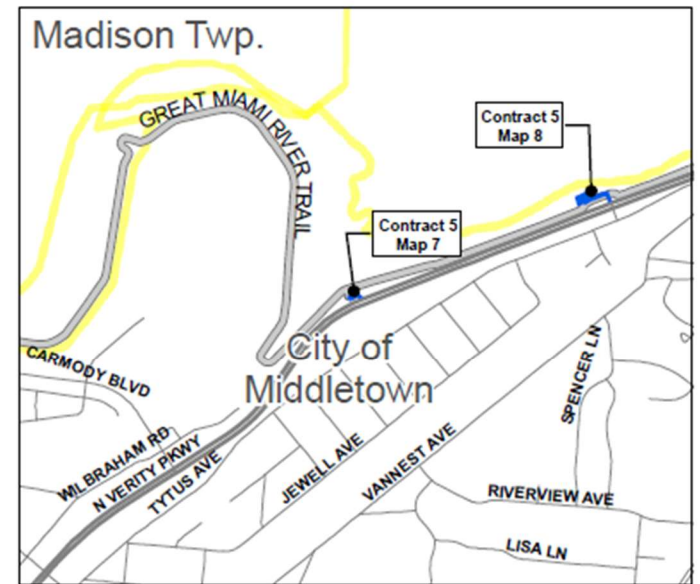
GRAPHIC SCALE



2051 Timberman Road, Hamilton, OH 45013  
www.YourMetroParks.net (513) 867-5835

ML 12/6/2022





#### LEGEND

#### Mowing Areas

Contract No. 5

Roads

#### VICINITY MAP

Property Lines

Contractor to mow all lawn areas inside shaded areas which have been maintained as lawn previously.

Please see Contract Descriptions that coincide with each mapping area for more detailed information. Acreages shown are approximate and may include pavement areas. It is the Proposer's responsibility to visit and become familiar with each site prior to submitting a proposal.

SPECIAL INSTRUCTIONS:

## Mowing Map

Contract No. 5, Map No. 7

Great Miami River Trail

Middletown Segment-Flyer Trailhead Area

Site Address: 3801 N. Verity Pkwy.  
Middletown, OH 45044

0 15 30 60 90 Feet

GRAPHIC SCALE

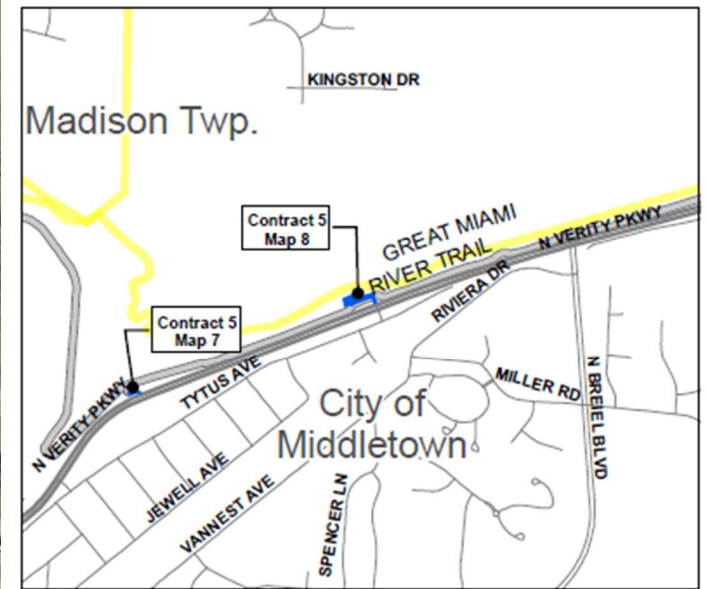


**MetroParks**  
of Butler County, OH

2051 Timberman Road, Hamilton, OH 45013  
www.YourMetroParks.net (513) 867-5835

ML 12/6/2022





#### LEGEND

#### VICINITY MAP

##### Mowing Areas

Property Lines

Contract No. 5

Roads

Contractor to mow all lawn areas inside shaded areas which have been maintained as lawn previously.

Please see Contract Descriptions that coincide with each mapping area for more detailed information. Acreages shown are approximate and may include pavement areas. It is the Proposer's responsibility to visit and become familiar with each site prior to submitting a proposal.

SPECIAL INSTRUCTIONS:

## Mowing Map

Contract No. 5, Map No. 8

Great Miami River Trail

Middletown Segment-Miami Trailhead Area

Site Address: 4401 N. Verity Pkwy.  
Middletown, OH 45044

0 50 100 200 300 Feet

GRAPHIC SCALE

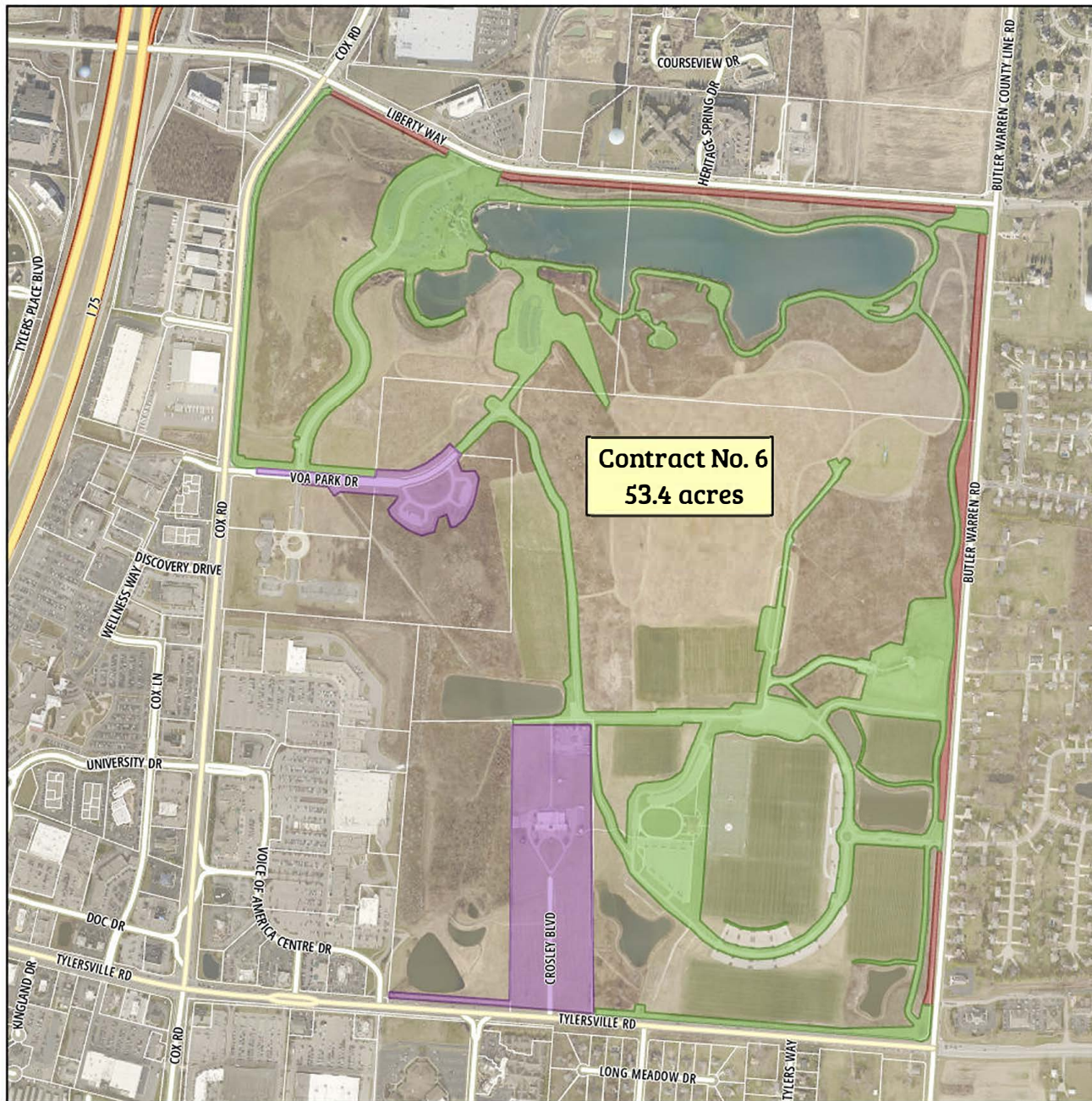


ML 12/6/2022

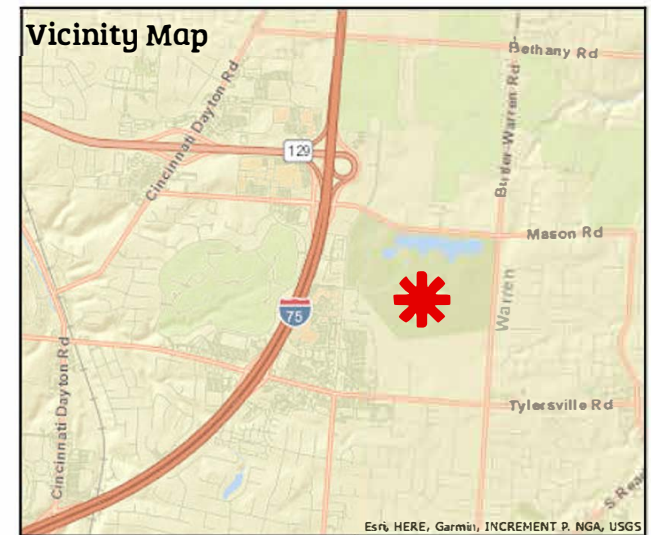


2051 Timberman Road, Hamilton, OH 45013  
www.YourMetroParks.net (513) 867-5835





**Contract No. 6**  
**53.4 acres**



### Mowing Areas

- Contract No. 6, Map No. 1
- Contract No. 7, Map No. 1
- Contract No. 8, Map No. 1

Contractor to mow all lawn areas inside shaded areas which have been previously maintained as lawn.

Please see Contract Descriptions that coincide with each mapping area for more detailed information. Acreages shown are approximate and may include pavement areas. It is the Proposer's responsibility to visit and become familiar with each site before submitting a proposal.

PZA 07Feb24

### Mowing Contract Map

Contract No. 6, Map 1

Voice of America MetroPark  
Lodge & Athletic Complex Area

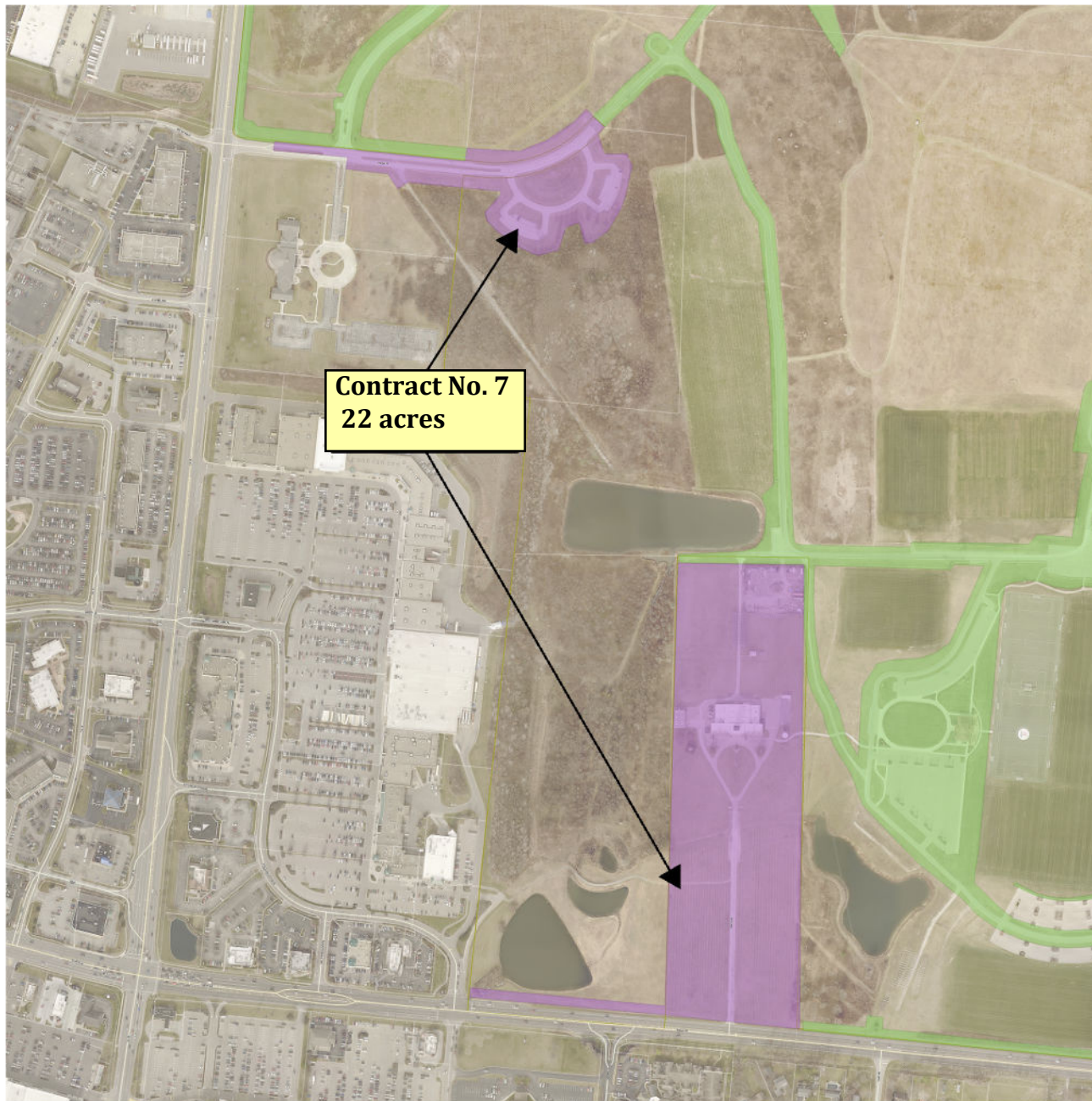
Site Address: 7850 VOA Park Drive  
West Chester, OH 45069

0 500 1,000 2,000 Feet

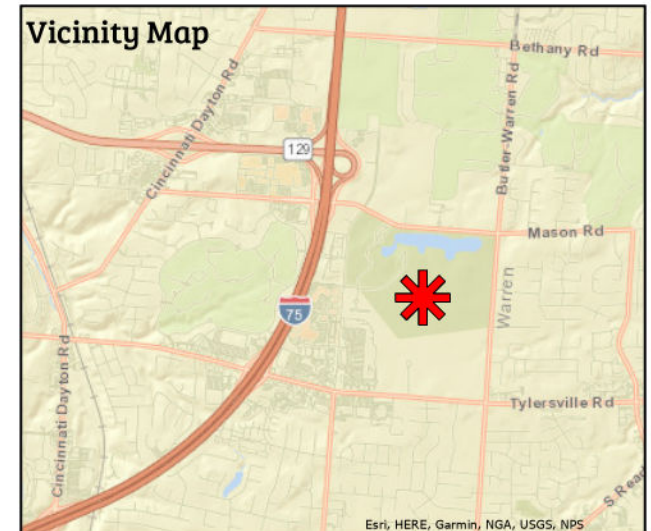


2051 Timberman Road, Hamilton, OH 45011  
[www.YourMetroParks.net](http://www.YourMetroParks.net) (513) 867-5835





**Contract No. 7**  
22 acres



### Mowing Areas

- Contract No. 6, Map No. 1
- Contract No. 7, Map No. 1
- Contract No. 8, Map No. 1

Contractor to mow all lawn areas inside shaded areas which have been previously maintained as lawn.

Please see Contract Descriptions that coincide with each mapping area for more detailed information. Acreages shown are approximate and may include pavement areas. It is the Proposer's responsibility to visit and become familiar with each site before submitting a proposal.

PZA 07Feb24

## Mowing Contract Map

Contract No. 7, Map 1

Voice of America MetroPark  
Museum and Tree Grove Area

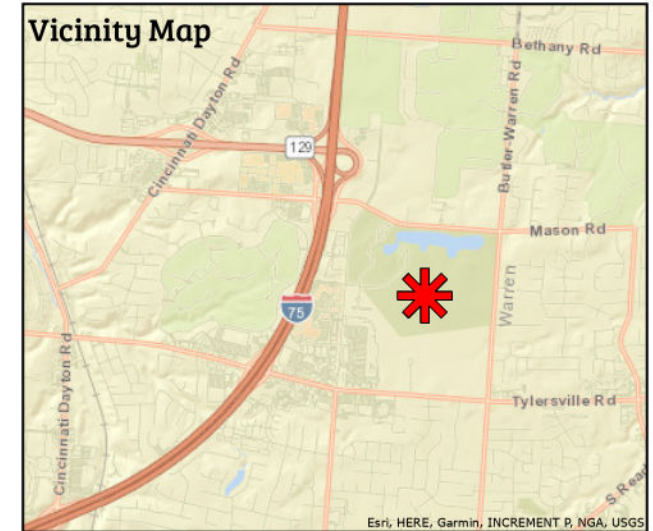
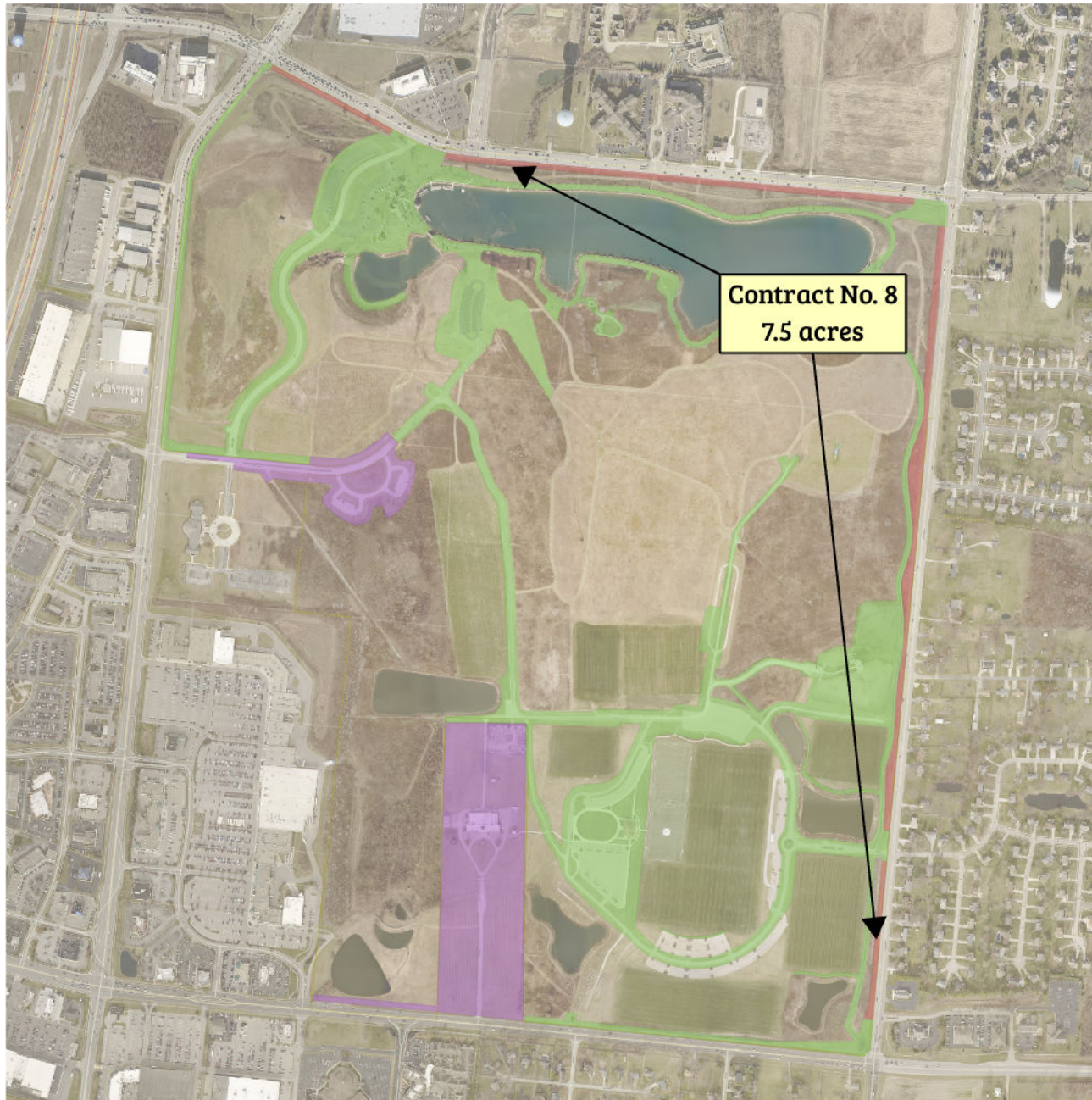
Site Address: 7850 VOA Park Drive  
West Chester, OH 45069

0 500 1,000 Feet



2051 Timberman Road, Hamilton, OH 45011  
[www.YourMetroParks.net](http://www.YourMetroParks.net) (513) 867-5835





### Mowing Areas

- Contract No. 6, Map No. 1
- Contract No. 7, Map No. 1
- Contract No. 8, Map No. 1

Contractor to mow all lawn areas inside shaded areas which have been previously maintained as lawn.

Please see Contract Descriptions that coincide with each mapping area for more detailed information. Acreages shown are approximate and may include pavement areas. It is the Proposer's responsibility to visit and become familiar with each site before submitting a proposal.

PZA 07Feb24

## Mowing Contract Map

Contract No. 8, Map 1

Voice of America MetroPark

Outer Perimeter Area

Site Address: 7850 VOA Park Drive  
West Chester, OH 45069

0 500 1,000 2,000 Feet



2051 Timberman Road, Hamilton, OH 45011  
[www.YourMetroParks.net](http://www.YourMetroParks.net) (513) 867-5835